

SALES PRODUCTION BOOK

XIAMEN AIBORT CLOTHING CO.,LTD



Shirley Jia
Xiamen Aibort Clothing Co.,Ltd
A: 5th Floor No. 7, Jinying Road, Xinglin, Jimei, Xiamen, China(361102)
T: +86 (0)592 5921 298 | F: +86 (0)592 5928 309 | M: +86 (0)13906036269
E: aibort@aibort.com
Skype: jia0124shirley

<http://www.aibort.com>

CONTENTS

ABOUT US	1.1
FACTORY VIEW	2.1
FABRIC DESCRIPTION	3.1
FABRIC DESCRIPTION	3.2
POLO STANDARD(SET IN SLEEVE)	4.1
POLO FITTED (SET IN SLEEVE)	4.2
POLO LADIES(SET IN SLEEVE)	4.3
POLO STANDARD(RAGLAN SLEEVE)	4.4
POLO FITED(RAGLAN SLEEVE)	4.5
POLO LADIES (RAGLAN SLEEVE)	4.6
TSHIRTS STANDARD	5.1
TSHIRTS FITTED	5.2
TSHIRTS LADIES	5.3
TSHIRTS MALE FASHION	5.4
SINGLET STANDARD	6.1
SINGLET FITTED	6.2
SHORTS STANDARD	7.1
JACKET LINED TRACKSUIT	8.1
PANTS LINED TRACKSUIT	8.2
JACKET ALL WEATHER	9.1
PANTS LINED ALL WEATHER STD	9.2
SWEATSHIRTS	10.1
RAGLAN SLEEVE HOODY	10.2
RAGLAN SLEEVE ZIP HOODY	10.3
SET IN SLEEVE HOODY	10.4
SET IN SLEEVE ZIP HOODY	10.5
VARSITY JACKET	11.1
SWEATER/HOODIE 1/4 ZIP	12.1

CONTENTS

SWEATER VEST 1/4 ZIP	12.2
SWEATER VEST FULL ZIP	12.3
JACKET 3/4 COAT	13.1
SOFTSHELL JACKET MEN	14.1
SOFTSHELL JACKET WOMEN	14.2
SPRING HOODIE JACKET FOR MEN	15.1
SPRING HOODIE JACKET FOR WOMEN	15.2
MEN'S SIZE GUIDE	16.1
WOMEN'S SIZE GUIDE	16.2
KID'S SIZE GUIDE	16.3
COLLAR TYPES	17.1
POCKET TYPES	18.1
PLACKET TYPES	19.1
ORDER GUIDE	20.1
PRICE LIST	21.1

ABOUT US

Xiamen Aibort Clothing Co., Ltd. is a clothing manufacturing and exporting company. She has been in business since 2007, Our clothing includes singlets, polo shirts, T-shirts, jackets, outdoor, sweatshirts, hoodies, pants, shorts, rugby shirts and sportswear.

Aibort Ltd MOQ Policy-we have different program to support our customer with their varied order qty and individualized design, MOQ in our company varies upon different items. It usually applies in one purchase of only one item. No matter what is the order quantity; we will listen to your suggestion and willing to help you make your draft design into finished products. We are proud to be your supplier Your success is our success.

Aibort Ltd has about 100 staff and 10 designers

This supports us to finish samples in 2-5 days and send goods with quality in delivery date requested.

Aibort Ltd clothing has been exported to Australia, Brazil, Canada, Denmark, Germany, Italy, the UK, Norway, Portugal, New Zealand, Switzerland, and the USA.

As a sportswear manufacturer, we manufacture top quality sportswear, for a variety of indoor and outdoor sports, using hi-tech fabrics and the latest printing techniques. We supply a full range of sports clothing, for professional, local and university sports clubs, plus both primary and secondary school teams.

We design and manufacture sportswear for teams of all sizes and for most sports. For large orders, we can create your own unique personalised range of team clothing.

We manufacture in our own factories, so are able to keep a close watch on quality and delivery times as we understand the importance of getting the correct garments to you, on time and in perfect condition.

We look forward to having an opportunity to working with your organisation, and helping you to...

[LOOK LIKE A TEAM AND PLAY LIKE A TEAM.](#)

Shirley Jia

Managing Director

FABRIC DESCRIPTION

ULTRAMESH COLOURED

- 100% Polyester 180gsm
- Fabric has been designed to transfer moisture away from the skin surface to the outer surface of the fabric for evaporation
- Primarily used for cut and sew polo's, shorts and singlets
- Hydrophilic polyester
- Cool to wear
- Quick to dry

AEROSPORT (SPORTS +)

65% polyester 35% cotton 195gsm
 Fabric has been designed to transfer moisture away from the skin surface to the outer surface of the fabric for evaporation
 Primarily used for cut and sew polo's and singlets
 Poly face cotton back
 Cool to wear

SPORTSFIBRE

- 100% polyester 90gsm
- Primarily used for cut and sew shorts, tracksuit jackets, track pants

NYLON SHELL / TASLON

- 100% Nylon Taslon 100gsm
- Primarily used for all-weather jackets and pants, rain jackets and pants

Available Colors



FABRIC DESCRIPTION

PC FLEECY

- 65% polyester 35% cotton 320gsm
- Primarily used for Hoodie and Sweatshirts and Sweatpants

POLAR FLEECY

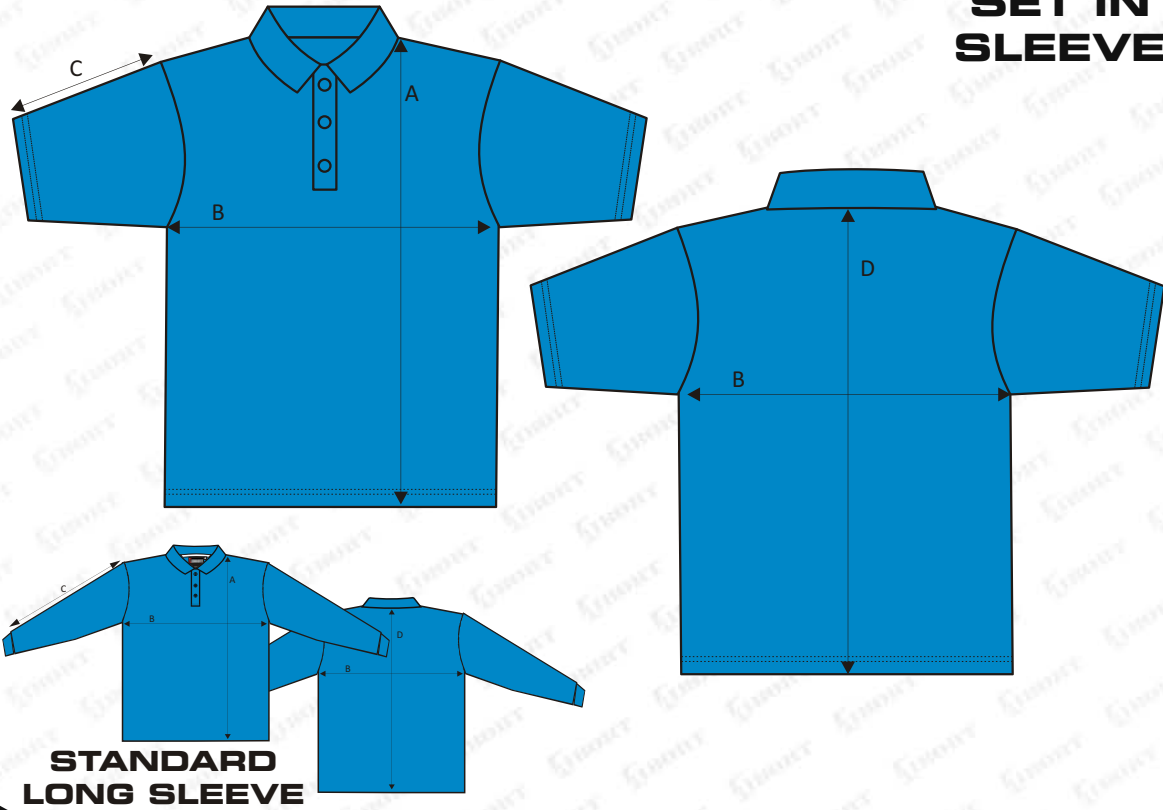
- 100% Polyester 300gsm 96F
- Primarily used for Hoodie and Jacket and Vest

Available Colors



POLO STANDARD (CUT & SEW)

SET IN SLEEVE



STANDARD LONG SLEEVE

FABRIC/MATERIALS

Ultra Mesh
Aero Mesh

POCKETS

Standard LHC.
Standard RHC.
Inside pocket RHC.
Inside pocket LHC.
Standard LHC pen seam.
Standard RHC pen seam.
2 standard waist.
2 inside waist.

PLACKET OR ZIP DETAILS

Standard 3 buttons.
Standard 2 buttons.
Box 3 buttons.
Box 4 buttons.
Ladies 3 buttons.
Ladies and standard 3 buttons.
Standard 10cm no buttons.
15cm zip #3
20cm zip #4

SLEEVE TYPE

Standard short sleeve.
Standard Long sleeve.
Long sleeve with padding.
Standard 3/4 sleeve.
Raglan short sleeve.
Raglan long sleeve.
Raglan 3/4 sleeve.
Capped sleeve.
Sleeveless.

NECK DETAILS

Laker V+ collar
Cricket shirt self collar.
Knitted collar.
Cycle collar with zip.

CUFFS OR SLEEVE OR ARM TRIM DETAILS

Cricket traditional button cuff.
Short sleeve knitted cuffs.
Long sleeve standard ribbing.
Long sleeve open cuff.
Simple button cuff.

EXTRA OPTIONS

Piping.
Side Vents- 3cm or 5cm.
Tail

SIZE	4	6	8	10	12	XS	S	M	L	XL	2XL	3XL	4XL	5XL	6XL	7XL	8XL	9XL
TO FIT APPROX CHEST (MEASURED AT PERSONS CHEST)	58	60	66	70	78	85	92	95	100	105	110	115	120	125	130	133	136	139
ACTUAL FRONT LENGTH (A)	43.5	48.5	53.5	58.5	62.5	66	72	74	75	76	77	78	79	80	82	84	86	88
ACTUAL CHEST WIDTH (B)	36	38	40	43	47	51.5	54	56.5	59	61.5	64	66.5	69	71.5	74	76.5	79	81.5
ACTUAL POLO SHORT SLEEVE LENGTH (C)	15	16	17	18	20	20.5	21	21.5	22	22.5	23	23.5	24	24.5	25	25.5	26	26.5
ACTUAL POLO LONG SLEEVE LENGTH (C)	32	32	38.5	44	50.5	54.5	60.5	61.5	63.5	63.5	63.5	65.5	65.5	65.5	65.5	65.5	65.5	67
ACTUAL POLO 3/4 SLEEVE LENGTH (C)	19	22	28.5	34	40	44.5	43.5	46.5	50.5	50.5	50.5	51.5	52.5	53.5	54.5	54.5	54.5	56

Standard sleeve length is measured from the shoulder point.
All measurements are when garment is laying flat.

POLO FITTED(CUT & SEW)



FABRIC/MATERIALS

Ultra Mesh
Aero Mesh

POCKETS

Standard LHC.
Standard RHC.
Inside pocket RHC.
Inside pocket LHC.
Standard LHC pen seam.
Standard RHC pen seam.
2 standard waist.
2 inside waist.

PLACKET OR ZIP DETAILS

Standard 3 buttons.
Standard 2 buttons.
Box 3 buttons.
Box 4 buttons.
Ladies 3 buttons.
Ladies and standard 3 buttons.
Standard 10cm no buttons.
15cm zip #3
20cm zip #4

SLEEVE TYPE

Standard short sleeve.
Standard Long sleeve.
Long sleeve with padding.
Standard 3/4 sleeve.
Raglan short sleeve.
Raglan long sleeve.
Raglan 3/4 sleeve.
Capped sleeve.
Sleeveless.

NECK DETAILS

Laker V+ collar
Cricket shirt self collar.
Knitted collar.
Cycle collar with zip.

CUFFS OR SLEEVE OR ARM TRIM DETAILS

Cricket traditional button cuff.
Short sleeve knitted cuffs.
Long sleeve standard ribbing.
Long sleeve open cuff.
Simple button cuff.

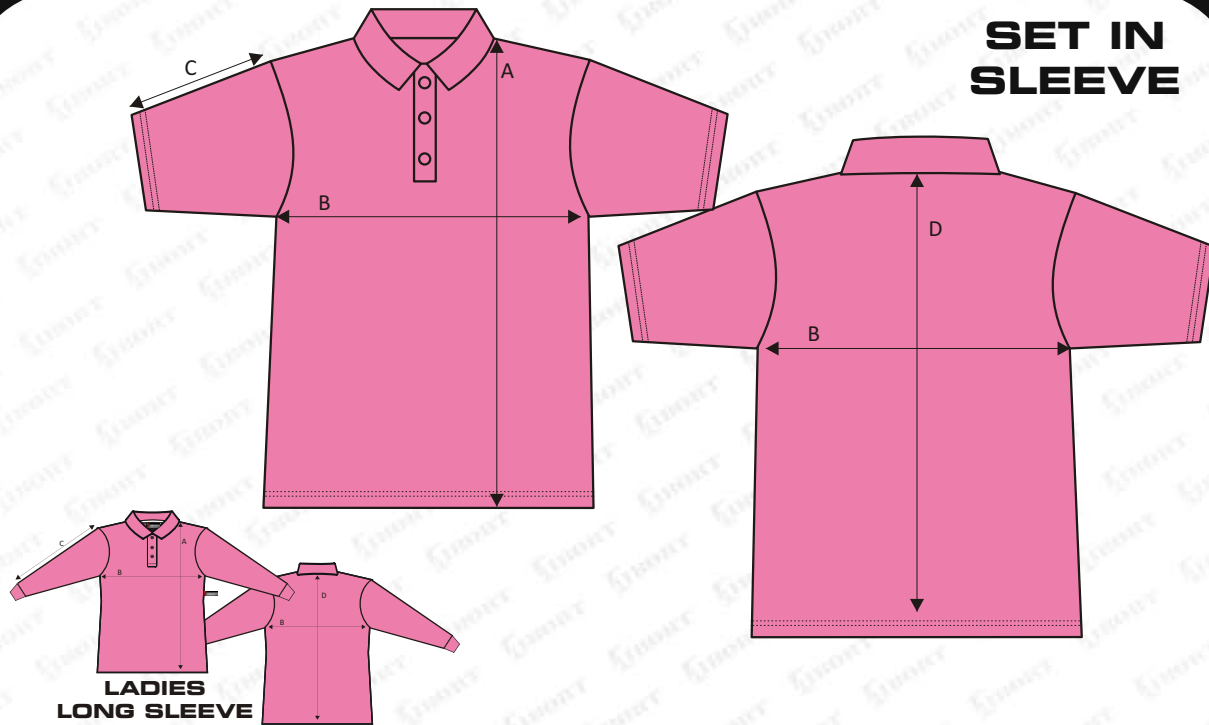
EXTRA OPTIONS

Piping.
Side Vents- 3cm or 5cm.
Tail

SIZE	4	6	8	10	12	XS	S	M	L	XL	2XL	3XL	4XL	5XL	6XL	7XL	8XL	9XL
TO FIT APPROX CHEST (MEASURED AT PERSONS CHEST)	58	60	66	70	78	85	92	94	100	106	112	118	120	125	127	130	133	136
ACTUAL FRONT LENGTH (A)	43.5	47.5	51.5	55.5	58.5	61	63	64.5	66	67.5	71.5	75.5	77	78.5	80	81.5	83	84.5
ACTUAL CHEST WIDTH (B)	32.5	34.5	37.5	39.5	43	43.5	45.5	48	50.5	53	55.5	58	60.5	63	65.5	68	70.5	73
ACTUAL POLO SHORT SLEEVE LENGTH (C)	13.5	14.5	15.5	16.5	17.5	18	19	22	22.5	23	23.5	23.5	23.5	23.5	24	24.5	25	25.5
ACTUAL POLO LONG SLEEVE LENGTH (C)	36	39	43	49	56.5	61	62	64	65	66.5	67.5	68	68.5	68.5	68.5	69	69	70
ACTUAL POLO 3/4 SLEEVE LENGTH (C)	22.5	25.5	28.5	34.5	39	45.5	46.5	45.5	47.5	47	47	47.5	47.5	46	45	44.5	44.5	47

Fitted sleeve length is measured from the shoulder point.
All measurements are when garment is laying flat.

POLO LADIES (CUT & SEW)



SET IN SLEEVE

*** Comes with standard placket unless specified with ladies placket***

FABRIC/MATERIALS

Ultra Mesh
Aero Mesh

POCKETS

Standard LHC.
Standard RHC.
Inside pocket RHC.
Inside pocket LHC.
Standard LHC pen seam.
Standard RHC pen seam.
2 standard waist.
2 inside waist.

PLACKET OR ZIP DETAILS

Standard 3 buttons.
Standard 2 buttons.
Box 3 buttons.
Box 4 buttons.
Ladies 3 buttons.
Ladies and standard 3 buttons.
Standard 10cm no buttons.
15cm zip #3
20cm zip #4

SLEEVE TYPE

Standard short sleeve.
Standard Long sleeve.
Long sleeve with padding.
Standard 3/4 sleeve.
Raglan short sleeve.
Raglan long sleeve.
Raglan 3/4 sleeve.
Capped sleeve.
Sleeveless.

NECK DETAILS

Laker V+ collar
Cricket shirt self collar.
Knitted collar.
Cycle collar with zip.

CUFFS OR SLEEVE OR ARM TRIM DETAILS

Cricket traditional button cuff.
Short sleeve knitted cuffs.
Long sleeve standard ribbing.
Long sleeve open cuff.
Simple button cuff.

EXTRA OPTIONS

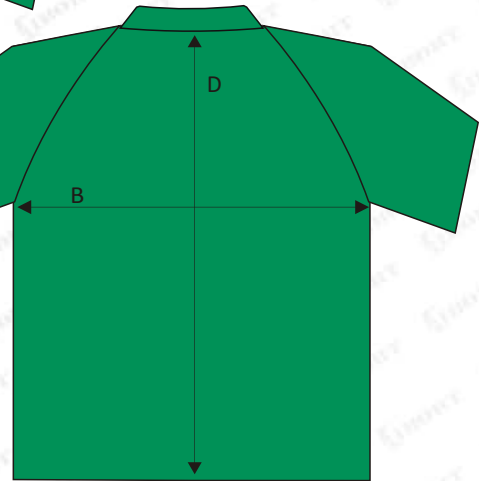
Piping.
Side Vents- 3cm or 5cm.
Tail.

SIZE	4	6	8	10	12	XS	S	M	L	XL	2XL	3XL	4XL	5XL	6XL	7XL	8XL	9XL
TO FIT APPROX CHEST (MEASURED AT PERSONS CHEST)	58	60	66	70	78	85	92	94	100	106	112	118	120	125	127	130	133	136
ACTUAL FRONT LENGTH (A)	43.5	47.5	51.5	55.5	58.5	60.5	62.5	64.5	66.5	68.5	71.5	74.5	77.5	80.5	83.5	86.5	86.5	89.5
ACTUAL CHEST WIDTH (B)	35.5	37.5	40.5	42.5	46.5	48.5	51	53.5	56	58.5	61	63.5	66	68.5	71	73.5	76	78.5
ACTUAL POLO SHORT SLEEVE LENGTH (C)	14	16	18	20	22	23	24	24.5	25	25.5	26	26.5	27	27	27.5	28	28	29
ACTUAL POLO LONG SLEEVE LENGTH (C)	35	38	42	48	55.5	58	59	61	62	64	64.5	65.5	65.5	65.5	66	66	66.5	67.5
ACTUAL POLO 3/4 SLEEVE LENGTH (C)	21.5	24.5	29.5	34.5	40	44.5	46.5	45.5	47.5	47.5	46	46	45.5	46	46	46	46	47

Ladies sleeve length is measured from the shoulder point.
All measurements are when garment is laying flat.

POLO STANDARD (CUT & SEW)

RAGLAN SLEEVE



RAGLAN LONG SLEEVE

FABRIC/MATERIALS

Ultra Mesh
Aero Mesh

POCKETS

Standard LHC.
Standard RHC.
Inside pocket RHC.
Inside pocket LHC.
Standard LHC pen seam.
Standard RHC pen seam.
2 standard waist.
2 inside waist.

PLACKET OR ZIP DETAILS

Standard 3 buttons.
Standard 2 buttons.
Box 3 buttons.
Box 4 buttons.
Ladies 3 buttons.
Ladies and standard 3 buttons.
Standard 10cm no buttons.
15cm zip #3
20cm zip #4

SLEEVE TYPE

Standard short sleeve.
Standard Long sleeve.
Long sleeve with padding.
Standard 3/4 sleeve.
Raglan short sleeve.
Raglan long sleeve.
Raglan 3/4 sleeve.
Capped sleeve.
Sleeveless.

NECK DETAILS

Laker V+ collar
Cricket shirt self collar.
Knitted collar.
Cycle collar with zip.

CUFFS OR SLEEVE OR ARM TRIM DETAILS

Cricket traditional button cuff.
Short sleeve knitted cuffs.
Long sleeve standard ribbing.
Long sleeve open cuff.
Simple button cuff.

EXTRA OPTIONS

Piping.
Side Vents- 3cm or 5cm.
Tail

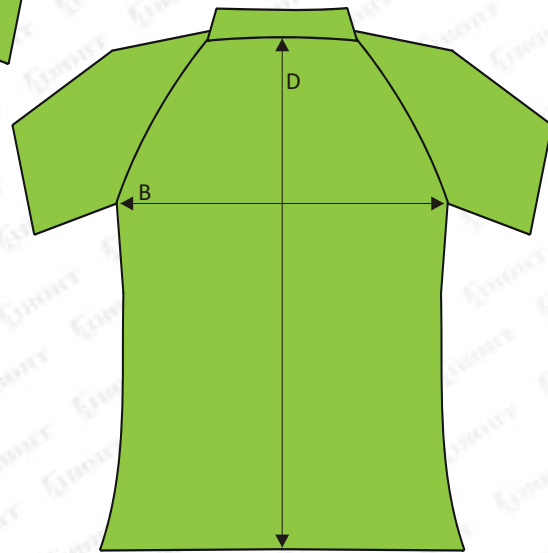
SIZE	4	6	8	10	12	XS	S	M	L	XL	2XL	3XL	4XL	5XL	6XL	7XL	8XL	9XL
TO FIT APPROX CHEST (MEASURED AT PERSONS CHEST)	58	60	66	70	78	85	90	95	100	105	110	115	120	125	130	133	136	139
ACTUAL FRONT LENGTH (A)	43.5	48.5	53.5	58.5	62.5	66	72	74	75	76	77	78	79	80	82	84	86	88
ACTUAL CHEST WIDTH (B)	36	38	40	43	47	51.5	54	56.5	59	61.5	64	66.5	69	71.5	74	76.5	79	81.5
ACTUAL POLO SHORT SLEEVE LENGTH (C)	20	23	25	27	31	33	33.5	35.5	37	39	40.5	42.5	44	46	47.5	49.5	49.5	50.5
ACTUAL POLO LONG SLEEVE LENGTH (C)	38	41	48	55	63	68.5	75.5	77.5	80	80.5	81.5	84	85	85.5	86.5	87.5	88.5	89.5
ACTUAL POLO 3/4 SLEEVE LENGTH (C)	27	31	38	45	53	55.5	58.5	62	67	67.5	68.5	70	72	73.5	75.5	76.5	77.5	78.5

Raglan sleeve length is measured from the side neck seam.
All measurements are when garment is laying flat.

POLO FITTED(CUT & SEW)



RAGLAN SLEEVE



RAGLAN LONG SLEEVE

FABRIC/MATERIALS

Ultra Mesh

Aero Mesh

POCKETS

Standard LHC.
Standard RHC.
Inside pocket RHC.
Inside pocket LHC.
Standard LHC pen seam.
Standard RHC pen seam.
2 standard waist.
2 inside waist.

PLACKET OR ZIP DETAILS

Standard 3 buttons.
Standard 2 buttons.
Box 3 buttons.
Box 4 buttons.
Ladies 3 buttons.
Ladies and standard 3 buttons.
Standard 10cm no buttons.
15cm zip #3
20cm zip #4

SLEEVE TYPE

Standard short sleeve.
Standard Long sleeve.
Long sleeve with padding.
Standard 3/4 sleeve.
Raglan short sleeve.
Raglan long sleeve.
Raglan 3/4 sleeve.
Capped sleeve.
Sleeveless.

NECK DETAILS

Laker V+ collar
Cricket shirt self collar.
Knitted collar.
Cycle collar with zip.

CUFFS OR SLEEVE OR ARM TRIM DETAILS

Cricket traditional button cuff.
Short sleeve knitted cuffs.
Long sleeve standard ribbing.
Long sleeve open cuff.
Simple button cuff.

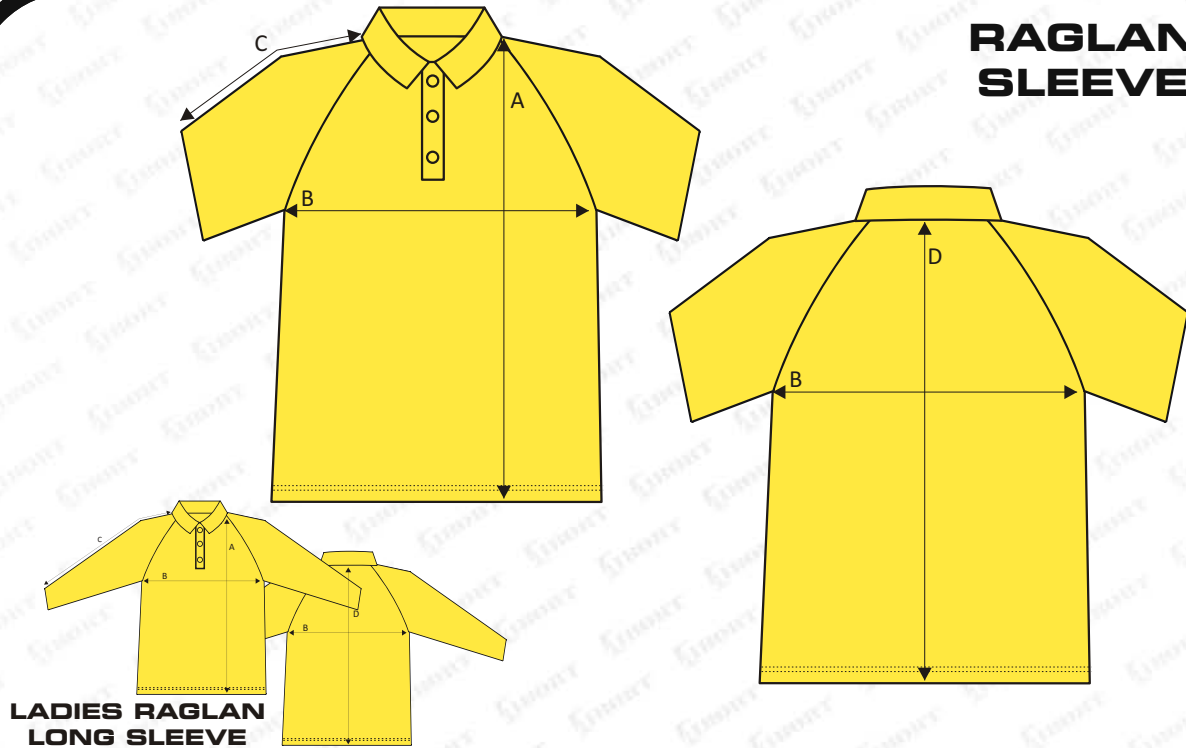
EXTRA OPTIONS

Piping.
Side Vents- 3cm or 5cm.
Tail

SIZE	4	6	8	10	12	XS	S	M	L	XL	2XL	3XL	4XL	5XL	6XL	7XL	8XL	9XL
TO FIT APPROX CHEST (MEASURED AT PERSONS CHEST)	58	60	66	70	78	85	92	94	100	106	112	118	120	125	127	130	133	136
ACTUAL FRONT LENGTH (A)	43.5	47.5	51.5	55.5	58.5	61	63	64.5	66	67.5	71.5	75.5	77	78.5	80	81.5	83	84.5
ACTUAL CHEST WIDTH (B)	32.5	34.5	37.5	39.5	43	43.5	45.5	48	50.5	53	55.5	58	60.5	63	65.5	68	70.5	73
ACTUAL POLO SHORT SLEEVE LENGTH (C)	18	21	23	25	27	27.5	29.5	32	35	36.5	38.5	40	42	43.5	45.5	45.5	45.5	47
ACTUAL POLO LONG SLEEVE LENGTH (C)	41.5	45.5	50.5	57.5	66.5	71.5	73	76	77.5	80.5	82	84	85.5	86.5	87.5	89	90.5	91.5
ACTUAL POLO 3/4 SLEEVE LENGTH (C)	28	31	36	43	49	56	57.5	57.5	60	61	61.5	63.5	64	64	64	64.5	65.5	66.5

Raglan sleeve length is measured from the side neck seam.
All measurements are when garment is laying flat.

RAGLAN SLEEVE



*** Comes with standard placket unless specified with ladies placket ***

FABRIC/MATERIALS

Ultra Mesh
Aero Mesh

POCKETS

Standard LHC.
Standard RHC.
Inside pocket RHC.
Inside pocket LHC.
Standard LHC pen seam.
Standard RHC pen seam.
2 standard waist.
2 inside waist.

PLACKET OR ZIP DETAILS

Standard 3 buttons.
Standard 2 buttons.
Box 3 buttons.
Box 4 buttons.
Ladies 3 buttons.
Ladies and standard 3 buttons.
Standard 10cm no buttons.
15cm zip #3
20cm zip #4

SLEEVE TYPE

Standard short sleeve.
Standard Long sleeve.
Long sleeve with padding.
Standard 3/4 sleeve.
Raglan short sleeve.
Raglan long sleeve.
Raglan 3/4 sleeve.
Capped sleeve.
Sleeveless.

NECK DETAILS

Laker V+ collar
Cricket shirt self collar.
Knitted collar.
Cycle collar with zip.

CUFFS OR SLEEVE OR ARM TRIM DETAILS

Cricket traditional button cuff.
Short sleeve knitted cuffs.
Long sleeve standard ribbing.
Long sleeve open cuff.
Simple button cuff.

EXTRA OPTIONS

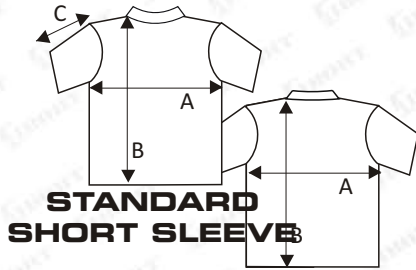
Piping.
Side Vents- 3cm or 5cm.
Tail.

SIZE	4	6	8	10	12	XS	S	M	L	XL	2XL	3XL	4XL	5XL	6XL	7XL	8XL	9XL
TO FIT APPROX CHEST (MEASURED AT PERSONS CHEST)	58	60	66	70	78	85	92	94	100	106	112	118	120	125	127	130	133	136
ACTUAL FRONT LENGTH (A)	43.5	47.5	51.5	55.5	58.5	60.5	62.5	64.5	66.5	68.5	71.5	74.5	77.5	80.5	83.5	86.5	86.5	89.5
ACTUAL CHEST WIDTH (B)	35.5	37.5	40.5	42.5	46.5	48.5	51	53.5	56	58.5	61	63.5	66	68.5	71	73.5	76	78.5
ACTUAL POLO SHORT SLEEVE LENGTH (C)	17.5	20.5	22.5	24.5	26.5	27.5	29	32	34.5	36	38	40	41.5	43.5	45	45	45	46
ACTUAL POLO LONG SLEEVE LENGTH (C)	41.5	45.5	50.5	57.5	66.5	71	73	75.5	77.5	80	82	83.5	85	86	87.5	89	90.5	91.5
ACTUAL POLO 3/4 SLEEVE LENGTH (C)	28	32	38	44	51	57.5	60.5	60.5	63	63.5	63.5	64.5	65	66.5	67.5	68.5	69.5	70.5

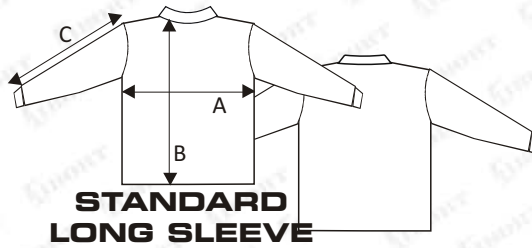
Raglan sleeve length is measured from the side neck seam.
All measurements are when garment is laying flat.

TSHIRT STANDARD

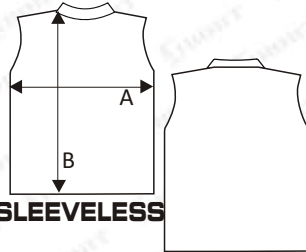
AIBORTSTD01



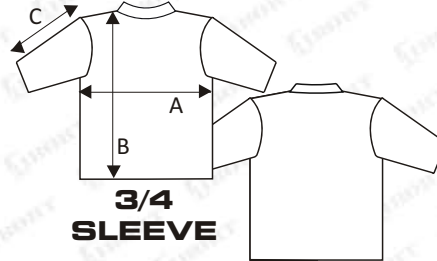
STANDARD SHORT SLEEVE



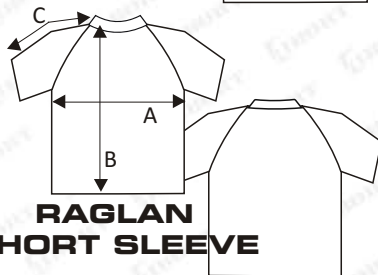
STANDARD LONG SLEEVE



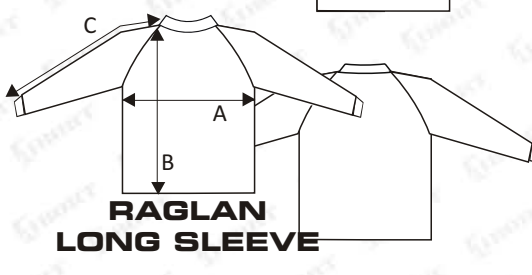
SLEEVELESS



3/4 SLEEVE



RAGLAN SHORT SLEEVE



RAGLAN LONG SLEEVE

FABRIC/MATERIALS

Ultra Mesh

Aero Mesh

SLEEVE TYPE

- Standard short sleeve.
- Standard Long sleeve.
- Long sleeve with padding.
- Standard 3/4 sleeve.
- Raglan short sleeve.
- Raglan long sleeve.
- Raglan 3/4 sleeve.
- Sleeveless.

NECK DETAILS

- Laker V
- Cricket shirt self collar.
- Cycle collar with zip.
- 10mm Tshirt trim
- 12mm binding
- Ribbing
- X over V
- Hummel neck
- Liverpool neck

SLEEVE DETAILS

- Long sleeve standard ribbing.
- Long sleeve open cuff.

EXTRA OPTIONS

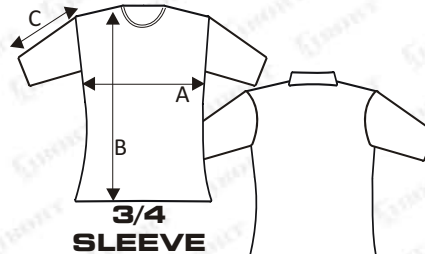
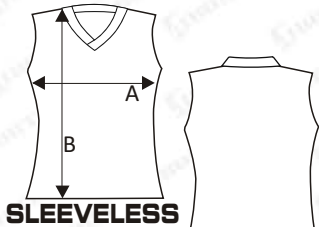
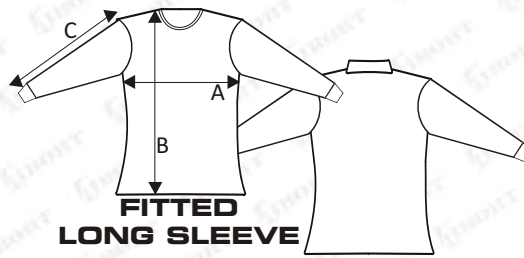
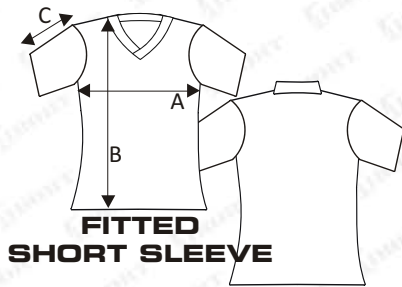
- Piping.
- Side Vents- 3cm or 5cm.
- Tail.

SIZE	4	6	8	10	12	XS	S	M	L	XL	2XL	3XL	4XL	5XL	6XL	7XL	8XL	9XL	10XL	12XL	13XL	
TO FIT APPROX CHEST (MEASURED AT PERSONS CHEST)	58	60	66	70	78	85	90	95	100	105	110	115	120	125	130	133	136	139	142	145	147	
(A) ACTUAL SHIRT WIDTH	33	37	41	43	47	50	54	56	59	62	64	67	69	72	76	79	82	86	91	96	98	
(B) ACTUAL SHIRT LENGTH	42	48	52	60	64	68	74	76	77	78	80	81	82	82	86	87	88	91	92	93	97	
(C) ACTUAL POLO SHORT SLEEVE LENGTH (FROM CENTRE BACK TO BOTTOM OF SLEEVE)	28	33	36	37	41	43	46	47	49	50	52	54	55	57	59	60	60	64	63	66	66	
(C) ACTUAL POLO LONG SLEEVE LENGTH (FROM CENTRE BACK TO BOTTOM OF SLEEVE)	NOT AVAILABLE	49	56	63	71	77	84	85	89	90	91	94	95	96	97	98	99	106				
(C) ACTUAL POLO CAPPED SLEEVE LENGTH (FROM CENTRE BACK TO BOTTOM OF SLEEVE)	22	25	26	27	31	31	32	33	35	36	38	39	40									
(C) ACTUAL POLO 3/4 SLEEVE LENGTH (FROM CENTRE BACK TO BOTTOM OF SLEEVE)	NOT AVAILABLE	38	45	52	60	66	66	70	75	76	77	79	X	X	85	86	87					

NOT AVAILABLE

TSHIRT FITTED

AIBORTFTD001



FABRIC/MATERIALS

Ultra Mesh
Aero Mesh

SLEEVE TYPE

Short sleeve.
Long sleeve.
Long sleeve with padding.
Standard 3/4 sleeve.
Raglan short sleeve.
Raglan long sleeve.
Raglan 3/4 sleeve.
Sleeveless.

NECK DETAILS

Laker V
Cricket shirt self collar.
Cycle collar with zip.
10mm Tshirt trim
12mm binding
Ribbing
X over V

SLEEVE DETAILS

Long sleeve standard ribbing.
Long sleeve open cuff.

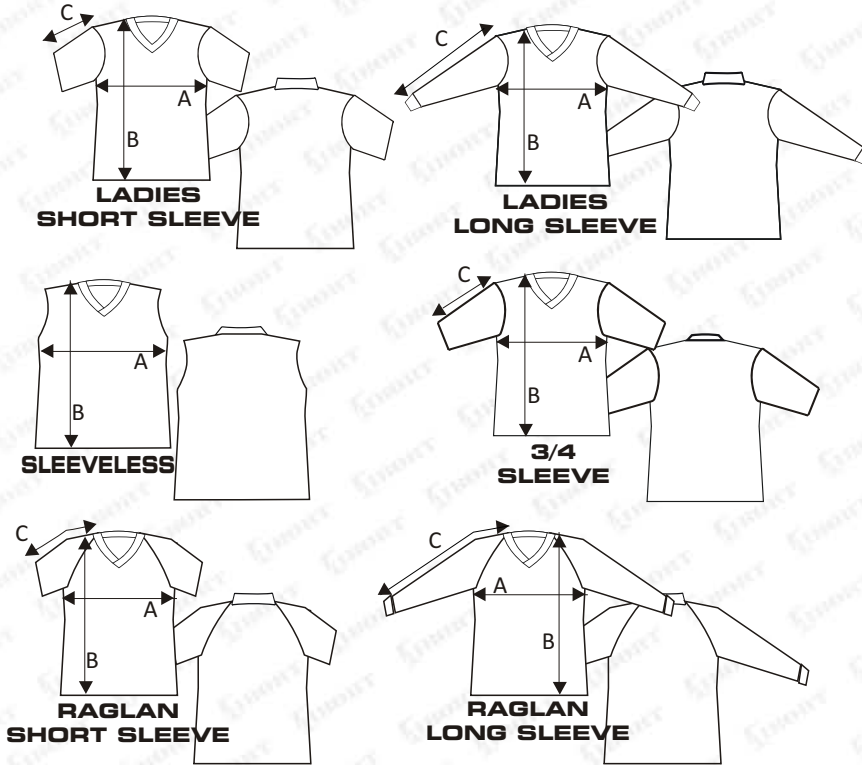
EXTRA OPTIONS

Piping.
Side Vents- 3cm or 5cm.
Tail.

SIZE	4	6	8	10	12	XS	S	M	L	XL	2XL	3XL	4XL	5XL	6XL	7XL	8XL
TO FIT APPROX CHEST (MEASURED AT PERSONS CHEST)	58	60	66	70	78	85	92	94	100	106	112	118	120	125	127	130	133
(A) ACTUAL SHIRT WIDTH	35	36	37	40	42	44	46	48	51	54	57	61	62	65	67	68	71
(B) ACTUAL SHIRT LENGTH	45	48	51	56	58	61	63	64	66	69	73	76	79	81	82	83	85
(C) ACTUAL POLO SHORT SLEEVE LENGTH (FROM CENTRE BACK TO BOTTOM OF SLEEVE)	28	30	32	33	34	36	38	41	43	46	48	53	53	53	53	53	55
(C) ACTUAL POLO LONG SLEEVE LENGTH (FROM CENTRE BACK TO BOTTOM OF SLEEVE)	50	52	56	62	70	76	79	81	84	87	89	90	91	93	93		
(C) ACTUAL POLO 3/4 SLEEVE LENGTH (FROM CENTRE BACK TO BOTTOM OF SLEEVE)	34	37	42	49	55	62	64	64	67	68	69	71	72	72	72		
																	NOT AVAILABLE

TSHIRT LADIES

AIBORTLDS001



FABRIC/MATERIALS

Ultra Mesh
Aero Mesh

SLEEVE TYPE

Short sleeve.
Long sleeve.
Long sleeve with padding.
Standard 3/4 sleeve.
Raglan short sleeve.
Raglan long sleeve.
Raglan 3/4 sleeve.
Sleeveless.

NECK DETAILS

Laker V
Cricket shirt self collar.
Cycle collar with zip.
10mm Tshirt trim
12mm binding
Ribbing
X over V
Hummel neck
Liverpool neck

SLEEVE DETAILS

Long sleeve standard ribbing.
Long sleeve open cuff.

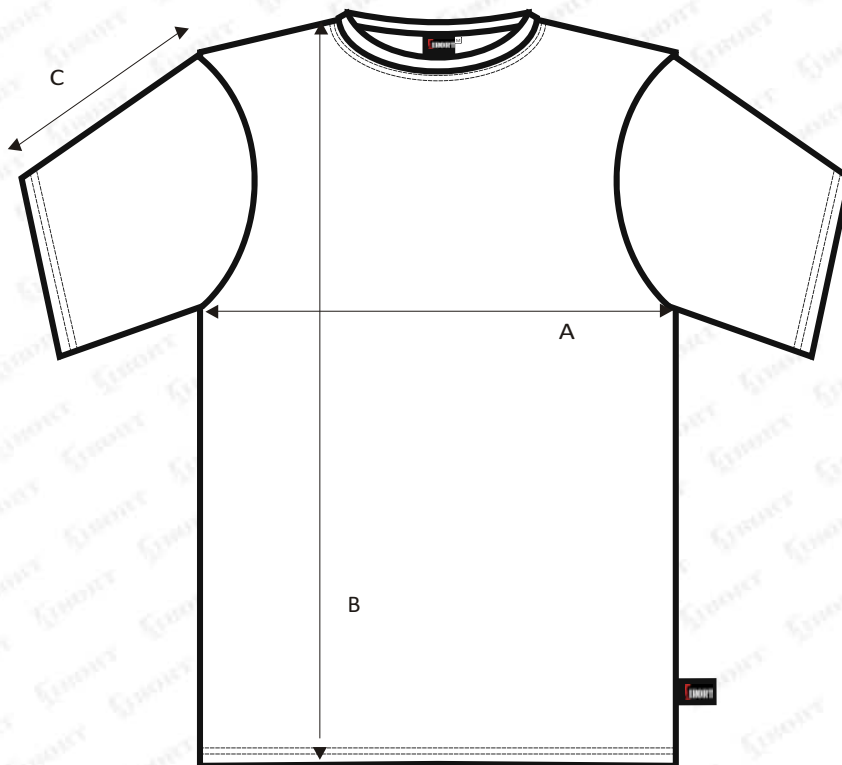
EXTRA OPTIONS

Piping.
Side Vents- 3cm or 5cm.
Tail.

SIZE	4	6	8	10	12	XS	S	M	L	XL	2XL	3XL	4XL	5XL	6XL	7XL
TO FIT APPROX CHEST (MEASURED AT PERSONS CHEST)	58	60	66	70	78	85	92	94	100	106	112	118	120	125	127	130
(A) ACTUAL SHIRT WIDTH	33	36	40	42	47	48	51	53	56	58	62	65	67	70	72	74
(B) ACTUAL SHIRT LENGTH	45	46	53	57	60	62	64	66	69	70	74	77	80	82	83	84
(C) ACTUAL POLO SHORT SLEEVE LENGTH (FROM CENTRE BACK TO BOTTOM OF SLEEVE)	28	32	35	37	44	44	47	48	49	51	53	55	56	58	59	63
(C) ACTUAL POLO LONG SLEEVE LENGTH (FROM CENTRE BACK TO BOTTOM OF SLEEVE)	48	52	57	64	73	78	80	83	85	88	90	92	92	95	96	
(C) ACTUAL POLO 3/4 SLEEVE LENGTH (FROM CENTRE BACK TO BOTTOM OF SLEEVE)	34	38	44	50	57	64	67	67	70	71	71	72	73	75	76	

TSHIRT MALE FASHION

AIBORTMFS001



FABRIC/MATERIALS

Ultramesh.
Aero sport (sports +)

NECK DETAILS

12mm self fabric binding.
Tshirt ribbing.

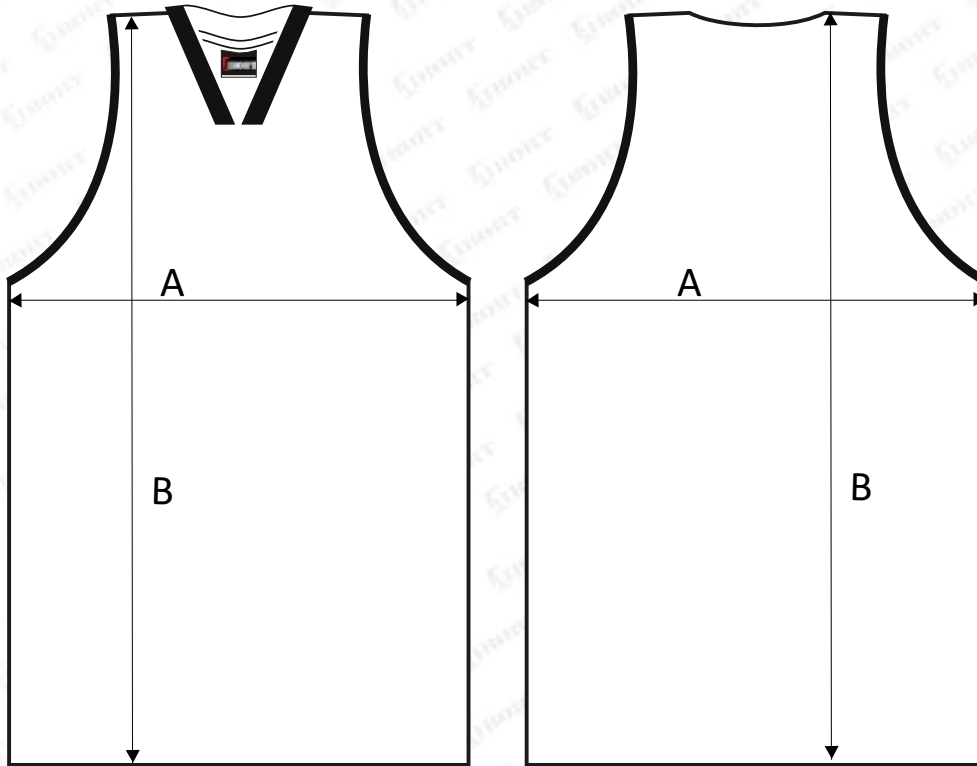
SLEEVE TYPE

Short sleeve

SIZE	6	8	10	12	XS	S	M	L	XL	2XL	3XL	4XL
TO FIT APPROX CHEST (MEASURED AT PERSONS CHEST)	60	66	70	78	85	90	95	100	105	110	115	120
ACTUAL SHIRT WIDTH (A)	37	40	42	47	50	53	56	59	63	62	67	69
ACTUAL SHIRT LENGTH (B)	48	53	59	64	68	71	73	76	78	79	81	83
ACTUAL POLO SHORT SLEEVE LENGTH (FROM CENTRE BACK TO BOTTOM OF SLEEVE) (C)	30	33	35	39	42	45	46	47	50	51	53	55

SINGLET STANDARD

ABTSINSTD001



FABRIC/MATERIALS

Ultramesh.
Aero sport (sports +).

SPECIAL NOTES:

1. With logos, allow room for neck and sleeve binding to come in 20mm from edge.
2. Available in speed back.

SLEEVE TYPE

Sleeveless.

ARM AND NECK TRIM DETAILS

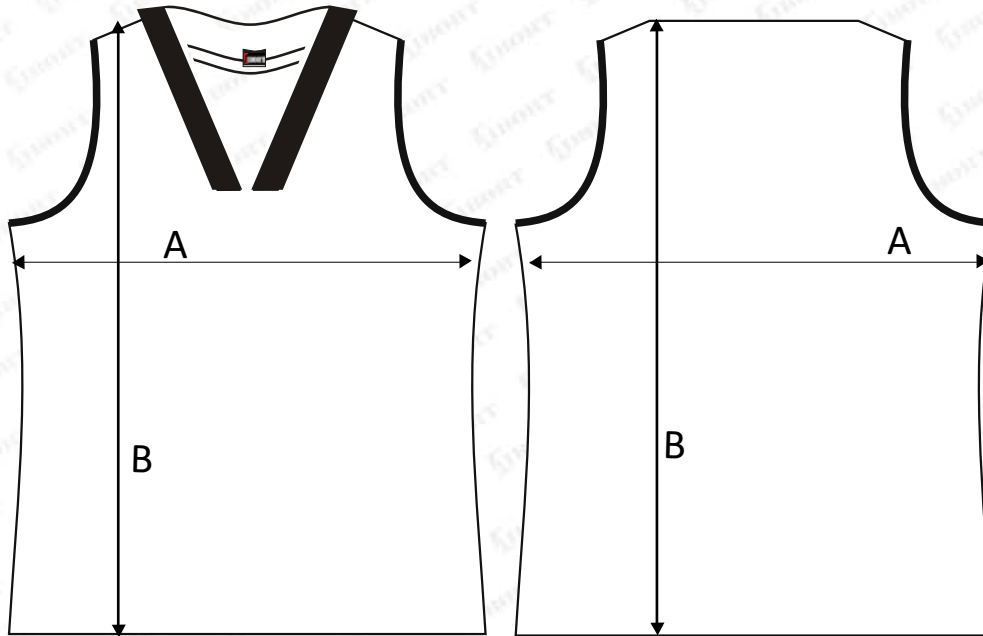
Laker V ****WITH**** edge.
Sublimated X over V neck.
Self colour X over V neck.
Singlet 12mm self fabric binding
Singlet twin needle.
Double singlet binding inside and outside
Round neck with binding

PLEASE NOTE: Unisex singlet is same pattern as standard with armholes raised 2cm.

SIZE	4	6	8	10	12	XS	S	M	L	XL	2XL	3XL	4XL	5XL	6XL	7XL
TO FIT APPROX CHEST (MEASURED AT PERSONS CHEST... APPROX)	58	60	66	70	78	85	90	95	100	105	110	115	120	125	130	133
(A) ACTUAL SINGLET WIDTH	33	37	40	42	47	50	54	56	59	62	64	67	69	72	75	77
(B) ACTUAL SINGLET LENGTH	45	48	53	60	65	69	75	78	79	80	82	83	84	85	87	88

SINGLET FITTED

ABTSINF001



FABRIC/MATERIALS

Ultramesh.
Aero sport (sports +).

SPECIAL NOTES:

1. With logos, allow room for neck and sleeve binding to come in 20mm from edge.
2. Available in speed back.

SLEEVE TYPE

Sleeveless.

ARM AND NECK TRIM DETAILS

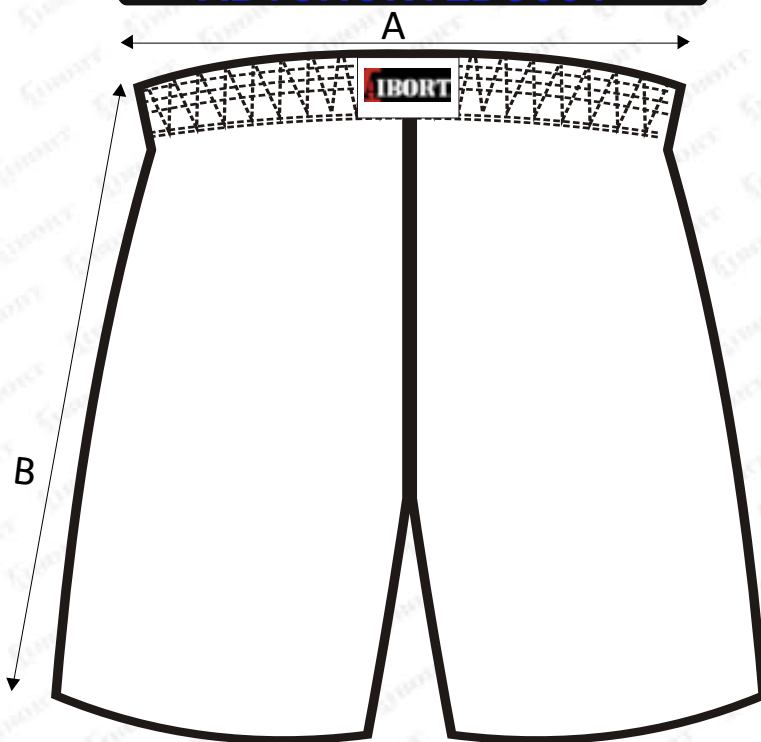
Laker V ****WITH**** edge.
Sublimated X over V neck.
Self colour X over V neck.
Singlet 12mm self fabric binding
Singlet twin needle.
Tshirt ribbing.
Double singlet binding inside and outside
Round neck with binding

SIZE	4	6	8	10	12	XS	S	M	L	XL	2XL	3XL	4XL	5XL
TO FIT APPROX CHEST (MEASURED AT PERSONS CHEST)	56	60	66	70	78	85	90	95	100	105	110	115	120	125
(A) ACTUAL SINGLET WIDTH	33	37	41	43	46	51	54	57	60	62	64	67	69	72
(B) ACTUAL SINGLET LENGTH	45	47	52	59	63	67	72	75	76	77	79	80	81	82

SHORTS STANDARD

**STANDARD
LADIES**

**ABTSHORTSSTD001
ABTSHORTLDS001**



FABRIC/MATERIALS

Ultramesh.
Aero sport (sports +).
Sports fibre.

POCKETS

Standard pocket.
Standard pocket + back RHS pocket.
Cutaway pocket.
Cutaway pock/piped.
Welt pocket.

SPECIAL NOTES:

1. Piping is optional for cut & sew garments.
2. 38mm elastic waist
3. Side panels are optional

STANDARD

SIZE	4	6	8	10	12	XS	S	M	L	XL	2XL	3XL	4XL	5XL	6XL	7XL
TO FIT APPROX WAIST (MEASURED AT PERSONS WAIST... APPROX)	56	58	60	63	66	71	76	82	86	91	96	101	106	111	115	118
ACTUAL ELASTIC WIDTH UNISEX (WHEN SHORTS ARE LYING (A) FLAT ON FLOOR)	24	26	27	28	30	32	33	35	36	38	40	41	43	45	46.5	47
UNISEX STANDARD LEG LENGTH (B) ABOVE KNEE	32	34	35	37	40	43	46	47	48	49	51	53	53	53	54.5	55
UNISEX LONG LEG LENGTH ON OR (B) BELOW KNEE	34	36	38	42	45	48	53	55	56	57	58	59	59	59	60	

LADIES

Available in size 8XL, 9XL and 10XL on request

SIZE	XS	S	M	L	XL	2XL	3XL	4XL	5XL
TO FIT APPROX WAIST (MEASURED AT PERSONS WAIST... APPROX)	71	76	82	86	91	96	101	106	111
ACTUAL ELASTIC WIDTH WOMENS (WHEN SHORTS ARE LYING FLAT ON FLOOR)	35	36	37	39	42	44	45	46	47
WOMENS STANDARD LEG LENGTH ABOVE KNEE	43	44	45	46	47	48	49	50	51
WOMENS LONG LEG LENGTH ON OR BELOW KNEE	46	50	52	53	53	54	55	55	55

JACKET LINED TRACKSUIT



FABRIC/MATERIALS

Sportsfibre
Fleecy.

SLEEVE TYPE

Long sleeve.

PLACKET OR ZIP DETAIL

Full zip

SPECIAL NOTES:

1. Available in elastic or bungee waist

POCKETS

Zip side pockets (jacket).
Welt side pockets with zip (jacket).

CUFFS OR SLEEVE OR ARM TRIM DETAILS

Elastic cuff or adjustable velcroe

See fabric information page for available colours

Available with flanelette, mesh or polar lining.

STANDARD

SIZE	4	6	8	10	12	XS	S	M	L	XL	2XL	3XL	4XL	5XL	6XL
TO FIT APPROX CHEST (MEASURED AT PERSONS CHEST... APPROX)	60	63	66	70	78	85	90	95	100	105	110	115	120	125	130
(A) ACTUAL JACKET WIDTH (ACTUAL GARMENT WIDTH)	37	42	45	49	51	55	57	60	62	65	67	70	72	75	77
(B) ACTUAL JACKET LENGTH (MEASURED FROM TOP OF SHOULDER TO BOTTOM OF JACKET) (ELASTIC WAIST IS SLIGHTLY SHORTER)	44	50	54	59	62	65	69	74	77	79	82	84	87	90	92
(C) ACTUAL JACKET SLEEVE LENGTH (FROM CENTRE BACK TO BOTTOM OF SLEEVE)	54	60	64	69	75	84	87	92	94	96	98	100	103	105	108
ELASTIC CUFF OPENING RELAXED	8	8.5	9	9.5	9.5	10	10	10.5	11	11.5	11.5	12	12	12	12

LADIES

THIS SIZING DOES NOT APPLY TO OFF THE SHELF NON KOMBAT MANUFACTURED GARMENTS

SIZE	4	6	8	10	12	XS	S	M	L	XL	2XL	3XL	4XL	5XL
TO FIT APPROX CHEST (MEASURED AT PERSONS CHEST... APPROX)	60	63	66	70	78	85	90	95	100	105	110	115	120	125
ACTUAL JACKET WIDTH (ACTUAL GARMENT WIDTH)	37	42	45	49	51	52	55	57	60	62	65	67	70	72
ACTUAL JACKET LENGTH (MEASURED FROM TOP OF SHOULDER TO BOTTOM OF JACKET) (ELASTIC WAIST IS SLIGHTLY SHORTER)	45	50	54	59	62	65	67	69	72	76	82	84	87	90
ACTUAL JACKET SLEEVE LENGTH (FROM CENTRE BACK TO BOTTOM OF SLEEVE)	54	60	64	69	75	84	85	87	89	93	96	98	100	101
ELASTIC CUFF OPENING RELAXED	8	8.5	9	9.5	9.5	10	10	10.5	11	11.5	11.5	12	12	12

IN LADIES ALPHA TERMS, A SIZE SMALL IS APPROXIMATELY EQUIVALENT TO A SIZE 10 LADIES AND SO FORTH

PANTS LINED TRACKSUIT



FABRIC/MATERIALS

Sportsfibre.
Fleecy.

POCKETS

Cutaway pockets
Cutaway pock/piped
Standard pockets
Welt pockets
Side pockets

SPECIAL NOTES:

1. Zip leg opening
2. Piping - Optional as per catalogue
3. 38mm corded elastic waist
4. Elastic leg opening -Optional

See fabric information page for available colours

4, 6, 8, 10, 12 kids use unisex sizing

STANDARD

SIZE	4	6	8	10	12	XS	S	M	L	XL	2XL	3XL	4XL	5XL
TO FIT APPROX WAIST (MEASURED AT PERSONS WAIST... APPROX ONLY)	56	58	60	63	66	71	76	82	86	91	96	101	106	111
(A) WAIST RELAXED (WHEN MEASURED FLAT ON FLOOR, NO STRETCH)	24	26	27	28	30	32	33	35	36	38	39	41	43	45
(B) OUTER LEG LENGTH	66	72	78	86	94	101	106	108	110	112	112	113	113	114
LEG ZIP LENGTH	20	20	25	25	25	35	35	35	35	35	35	35	35	35

LADIES

SIZE	4	6	8	10	12	XS	S	M	L	XL	2XL	3XL	4XL	5XL
TO FIT APPROX WAIST (MEASURED AT PERSONS WAIST... APPROX ONLY)	56	58	60	63	66	71	76	82	86	91	96	101	106	111
WAIST RELAXED (WHEN MEASURED FLAT ON FLOOR, NO STRETCH)	24	26	27	28	30	35	36	37	39	41	43	45	46	46
OUTER LEG LENGTH	66	72	78	86	94	100	102	104	106	107	107	108	108	109
LEG ZIP LENGTH	20	20	25	25	25	35	35	35	35	35	35	35	35	35

JACKET ALL WEATHER



FABRIC/MATERIALS
Nylon shell/mesh lining.
Nylon shell/polar lining.

SLEEVE TYPE
Long sleeve.

PLACKET OR ZIP DETAIL
Full zip (sweater).

SPECIAL NOTES:

1. Option - with or without tail on back of jacket.
2. Front flap with press stud buttons + hoodie hidden in back neck.

POCKETS
Zip side pockets (jacket).
Side pockets (jacket).

CUFFS OR SLEEVE OR ARM TRIM DETAILS
Elastic cuff or adjustable velcroe (double check)

See fabric information page for available colours

STANDARD

SIZE	4	6	8	10	12	XS	S	M	L	XL	2XL	3XL	4XL	5XL	6XL
TO FIT APPROX CHEST (MEASURED AT PERSONS CHEST... APPROX)	60	63	66	70	78	85	90	95	100	105	110	115	120	125	130
(A)ACTUAL JACKET WIDTH (ACTUAL GARMENT WIDTH)	37	42	45	49	51	55	57	60	62	65	67	70	72	75	77
(B)ACTUAL JACKET LENGTH (MEASURED FROM TOP OF SHOULDER TO BOTTOM OF JACKET) (ELASTIC WAIST IS SLIGHTLY SHORTER)	44	50	54	59	62	65	69	74	77	79	82	84	87	90	92
(C)ACTUAL JACKET SLEEVE LENGTH (FROM CENTRE BACK TO BOTTOM OF SLEEVE)	54	60	64	69	75	84	87	92	94	96	98	100	103	105	108
ELASTIC CUFF OPENING RELAXED	8	8.5	9	9.5	9.5	10	10	10.5	11	11.5	11.5	12	12	12	12

THIS SIZING DOES NOT APPLY TO OFF THE SHELF NON KOMBAT MANUFACTURED GARMENTS

LADIES

4, 6, 8, 10, 12 kids use unisex sizing

SIZE	4	6	8	10	12	XS	S	M	L	XL	2XL	3XL	4XL	5XL
TO FIT APPROX CHEST (MEASURED AT PERSONS CHEST... APPROX)	60	63	66	70	78	85	90	95	100	105	110	115	120	125
ACTUAL JACKET WIDTH (ACTUAL GARMENT WIDTH)	37	42	45	49	51	52	55	57	60	62	65	67	70	72
ACTUAL JACKET LENGTH (MEASURED FROM TOP OF SHOULDER TO BOTTOM OF JACKET) (ELASTIC WAIST IS SLIGHTLY SHORTER)	45	50	54	59	62	65	67	69	72	76	82	84	87	90
ACTUAL JACKET SLEEVE LENGTH (FROM CENTRE BACK TO BOTTOM OF SLEEVE)	54	60	64	69	75	84	85	87	89	93	96	98	100	101
ELASTIC CUFF OPENING RELAXED	8	8.5	9	9.5	9.5	10	10	10.5	11	11.5	11.5	12	12	12

IN LADIES ALPHA TERMS, A SIZE SMALL IS APPROXIMATELY EQUIVALENT TO A SIZE 10

PANTS LINED ALL WEATHER STD



FABRIC/MATERIALS

Nylon shell/mesh lining.
Nylon shell/polar lining.

COLOURS

See back of

POCKETS

Standard pockets
Welt pockets

SPECIAL NOTES:

1. Zip leg opening
2. Piping - Optional
3. 38mm corded elastic waist

See fabric information page for available colours

SIZE	4	6	8	10	12	XS	S	M	L	XL	2XL	3XL	4XL	5XL
TO FIT APPROX WAIST (MEASURED AT PERSONS WAIST)	56	58	60	63	66	71	76	82	86	91	96	101	106	111
(A) WAIST RELAXED (WHEN MEASURED FLAT ON FLOOR, NO STRETCH)	24	26	27	28	30	32	33	35	36	38	39	41	43	45
(B) OUTER LEG LENGTH	66	72	78	86	94	101	106	108	110	112	112	113	113	114

SWEATSHIRTS



SET IN SLEEVE

FABRIC/MATERIALS

Fleecy.

NECK DETAILS

Ribbing for round neck.

SLEEVE AND HEM DETAILS

Ribbing.

THIS SIZING DOES NOT APPLY TO OFF THE SHELF NON KOMBAT MANUFACTURED GARMENTS

SIZE	4	6	8	10	12	XS	S	M	L	XL	2XL	3XL	4XL	5XL	6XL
TO FIT APPROX CHEST (MEASURED AT PERSONS CHEST... APPROX)	60	63	66	70	78	85	90	95	100	105	110	115	120	125	130
(A) ACTUAL JACKET WIDTH (ACTUAL GARMENT WIDTH)	37	42	45	49	51	55	57	60	62	65	67	70	72	75	77
(B) ACTUAL JACKET LENGTH (MEASURED FROM TOP OF SHOULDER TO BOTTOM OF JACKET) (ELASTIC WAIST IS SLIGHTLY SHORTER)	44	50	54	59	62	65	69	74	77	79	82	84	87	90	92
(C) ACTUAL JACKET SLEEVE LENGTH (FROM CENTRE BACK TO BOTTOM OF SLEEVE)	54	60	64	69	75	84	87	92	94	96	98	100	103	105	108

RAGLAN SLEEVE HOODY



RAGLAN SLEEVE

MEN'S REGLAN SLEEVE HOODIE WITHOUT ZIPPER

men's reglan sleeve hoodie without zipper	XS	S	M	L	XL	2XL
1/2 chest (A)	55.5	58	60.5	63	65.5	68
1/2 bottom width (B)	55.5	58	60.5	63	65.5	68
body length(HSP) (C)	65	67	69	71	73	75
bottom rib height	7.5	7.5	7.5	7.5	7.5	7.5
bottom rib width	39.5	42	44.5	47	49.5	52
sleeve length(from cb to cuff inc. rib)	81	83	85	87	89	91
cuff rib height	6	6	6	6	6	6
cuff rib width	8.5	9	9.5	10	10.5	11
sleeve width (from armhole)	22.5	23.5	24.5	25.5	26.5	27.5
neck width	24	24	24	24	24	24
front neck drop	10	10	10	10	10	10
back neck drop	2.5	2.5	2.5	2.5	2.5	2.5
hoodie height	39	39	39	39	39	39
hoodie width	28	28	28	28	28	28
top pocket(width)	30	30	30	30	30	30
bottom pocket(width), stretch, not relax	40	40	40	40	40	40
pocket height	22	22	22	22	22	22
front reglan seam	34	35	36	37	38	39
back reglan seam	38	39	40	41	42	43

LADIES REGLAN SLEEVE-HOODIE WITHOUT ZIPPER

FL08: ladies reglan sleeve-Hoodie without zipper	8	10	12	14	16
1/2 chest (A)	47.5	50	52.5	55	57.5
1/2 chest (A)	47.5	50	52.5	55	57.5
body length(HSP) (C)	61	63	65	67	69
bottom rib height	7.5	7.5	7.5	7.5	7.5
bottom rib width	38.5	41	43.5	46	48.5
sleeve length(from cb to cuff inc. rib)	80	82	84	86	88
cuff rib height	6	6	6	6	6
cuff rib width	8.5	9	9.5	10	10.5
sleeve width (measure from armhole)	20	21	22	23	24
neck width	22	22	22	22	22
front neck drop	9	9	9	9	9
back neck drop	2	2	2	2	2
hoodie height	37	37	37	37	37
hoodie width	23	23	23	23	23
top pocket(width)	17	17	17	17	17
bottom pocket(width),	25	25	25	25	25
pocket height	19	19	19	19	19
front reglan seam	27	28	29	30	31
back reglan seam	29	30	31	32	33

RAGLAN SLEEVE ZIP HOODY



LADIES REGLAN SLEEVE-HOODIE WITH ZIPPER

		8	10	12	14	16
A	1/2 chest	47.5	50	52.5	55	57.5
	1/2 bottom width	47.5	50	52.5	55	57.5
B	body length(HSP)	61	63	65	67	69
	bottom rib height	7.5	7.5	7.5	7.5	7.5
	bottom rib width	38.5	41	43.5	46	48.5
C	sleeve length(from cb to cuff inc. rib)	80	82	84	86	88
	cuff rib height	6	6	6	6	6
D	cuff rib width	8.5	9	9.5	10	10.5
	sleeve width (measure from armhole)	20	21	22	23	24
	neck width	22	22	22	22	22
	front neck drop	9	9	9	9	9
	back neck drop	2	2	2	2	2
	hoodie height	37	37	37	37	37
	hoodie width	23	23	23	23	23
	top pocket(width)	18	18	18	18	18
	bottom pocket width,stretch,not relax,inc zip width	26	26	26	26	26
	pocket height	19	19	19	19	19
	front reglan seam	27	28	29	30	31
	back reglan seam	29	30	31	32	33

SET IN SLEEVE HOODY

SET IN SLEEVE



MENS SET IN SLEEVE HOODIE

	S	M	L	XL	2XL
1/2 chest (A)	57.5	60	62.5	65	67.5
1/2 bottom width (B)	57.5	60	62.5	65	67.5
body length(HSP) (C)	70	72	74	76	78
basque height	8	8	8	8	8
1/2 basque width	47.5	50	52.5	55	57.5
neck width	23	23	23	23	23
shoulder width	52	53	54	55	56
sleeve width (20cm from shoulder point)	21.4	22.7	23.1	23.5	24
sleevelength(fromshoulderto cuffinc.rib)	59.5	60	61.5	63	64.5
cuff rib height	7	7	7	7	7
1/2 sleeve opening (main fabric)	12.5	13	13.5	14	14.5
1/2 cuff rib width	9.25	9.5	9.75	10	10.25
1/2 armhole	27.2	27.9	28.7	29.5	30.3
front neck drop	10	10	10	10	10
back neck drop	4	4	4	4	4
hoodie height	39	39	39	39	39
hoodie width	27	27	27	27	27
top pocket(width)	30	30	30	30	30
bottom pocket width,stretch,not relax	39	39	39	39	39
pocket height	26	26	26	26	26

LADIES SET IN SLEEVE HOODIE

	4	6	8	10	12	14	16
1/2 chest (A)	42.5	45	47.5	50	52.5	55	57.5
1/2 bottom width (B)	42.5	45	47.5	50	52.5	55	57.5
body length(HSP) (C)	57	59	61	63	65	67	69
bottom rib height	7.5	7.5	7.5	7.5	7.5	7.5	7.5
bottom rib width	33.5	36	38.5	41	43.5	46	48.5
neck width	22	22	22	22	22	22	22
shoulder width	48	49	50	51	52	53	54
sleevelength(fromshoulderto cuffinc.rib)	56	57	58	59	60	61	62
cuff rib height	6	6	6	6	6	6	6
cuff rib width	7.5	8	8.5	9	9.5	10	10.5
1/2 armhole	23.5	24	24.5	25	25.5	26	26.5
front neck drop	9	9	9	9	9	9	9
back neck drop	2	2	2	2	2	2	2
hoodie height	37	37	37	37	37	37	37
hoodie width	23	23	23	23	23	23	23
top pocket(width)	18	18	18	18	18	18	18
bottom pocket width,stretch,not relax	26	26	26	26	26	26	26
pocket height	19	19	19	19	19	19	19

SET IN SLEEVE ZIP HOODY



SET IN SLEEVE

MEN'S SET-IN SLEEVE HOODIE WITH ZIPPER

		XS	S	M	L	XL	2XL	3XL
A	1/2 chest	57	59	61	63	65	67	69
	1/2 hem	57	59	61	63	65	67	69
B	length from height shoulder point (including basque)	66	68	70	72	74	76	78
	basque height	7	7	7	7	7	7	7
	basque width	47	49	51	53	55	57	59
C	sleeve length (including cuff)	60.5	61	61.5	62	62.5	63	63.5
	cuff height	7	7	7	7	7	7	7
	cuff opening	8.5	9	9.5	10	10.5	11	11.5
	armhole	27	28	29	30	31	32	33
	neck width	31	31	31	31	31	31	31
	shoulder width	54	56	58	60	62	64	66
	sleeve width(20cm from shoulder point)	21.5	22.5	23.5	24.5	25.5	26.5	27.5
	front neck drop	9	9	9	9	9	9	9
	back neck drop	3	3	3	3	3	3	3
	hood height (cf)	35	35	35	35	35	35	35
	hood deep (widest)	29	29	29	29	29	29	29
	pocket top	23	23	23	23	23	23	23
	pocket bottom	34	34	34	34	38	38	38
	pocket height	21.5	21.5	21.5	21.5	23.5	23.5	23.5
	self fabric band width (one side)	9	9	9	9	9	9	9

WOMEN'S SET-IN SLEEVE HOODIE WITH ZIPPER

		8	10	12	14
A	1/2 chest	48	50	52	55
	1/2 hem	48	50	52	55
B	length from height shoulder point (including basque)	61	62	63	64
	basque height	7	7	7	7
	basque width	39	41	43	45
C	sleeve length (including cuff)	58.5	59	59.5	60
	cuff height	7	7	7	7
	cuff opening	8	8	8.5	8.5
	armhole	24.5	25	25.5	26
	neck width	26	26	26	26
	shoulder width	46	48	50	52
	sleeve width(20cm from shoulder point)	19.5	20	20.5	21
	front neck drop	8	8	8	8
	back neck drop	3	3	3	3
	hood height (cf)	33	33	33	33
	hood deep (widest)	28	28	28	28
	pocket top	21	21	21	21
	pocket bottom	30	30	30	30
	pocket height	19.5	19.5	19.5	19.5
	self fabric band width (one side)	9	9	9	9

VARSITY JACKET



MEN'S

	S	M	L	XL	2XL
A CHEST	67.5	70	72.5	75	77.5
B BODY LENGTH(HPS)	71	73	75	77	79
C SLEEVE LENGTH	59	61	63	65	67
D CUFF WIDTH	10.5	11	11.5	12	12.5
E SHOULDER	55	57	59	61	63
F POCKET OPENING	16	16	16	16	16
G BOTTOM	40.5	43	45.5	48	50.5
H SLEEVE RIB HEIGHT	7	7	7	7	7
I BOTTOM RIB HEIGHT	7	7	7	7	7
J RIB COLLAR LENGTH	24	25	25	26	26
K RIB COLLAR HEIGHT	5	5	5	5	5

WOMEN'S

	8	10	12	14	16
A CHEST	55	57.5	60	62.5	65
B BODY LENGTH(HPS)	61	63	65	67	69
C SLEEVE LENGTH	49	51	53	55	57
D CUFF WIDTH	8	8.5	9	9.5	10
E SHOULDER	45	47	49	51	53
F POCKET OPENING	14	14	14	14	14
G BOTTOM	33	34	35	36	38
H SLEEVE RIB HEIGHT	7	7	7	7	7
I BOTTOM RIB HEIGHT	7	7	7	7	7
J RIB COLLAR LENGTH	22	22	23	23	24
K RIB COLLAR HEIGHT	5	5	5	5	5

SWEATER/HOODIE 1/4 ZIP



FABRIC/MATERIALS

Polar fleecy.
Fleecy.

POCKETS

Welt pocket
Patch pocket
Side pocket

SLEEVE AND CUFF TYPE

Long sleeve
Elasticated hem
Rib cuff

SPECIAL NOTES:

Bungee cord waist

STANDARD

SIZE	4	6	8	10	12	XS	S	M	L	XL	2XL	3XL	4XL	5XL	6XL
TO FIT APPROX CHEST (MEASURED AT PERSONS CHEST... APPROX)	60	63	66	70	78	85	90	95	100	105	110	115	120	125	130
(A) ACTUAL JACKET WIDTH (ACTUAL GARMENT WIDTH)	37	42	45	49	51	55	57	60	62	65	67	70	72	75	77
(B) ACTUAL JACKET LENGTH (MEASURED FROM TOP OF SHOULDER TO BOTTOM OF JACKET (ELASTIC WAIST IS SLIGHTLY SHORTER))	44	50	54	59	62	65	69	74	77	79	82	84	87	90	92
(C) ACTUAL JACKET SLEEVE LENGTH (FROM CENTRE BACK TO BOTTOM OF SLEEVE)	54	60	64	69	75	84	87	92	94	96	98	100	103	105	108
(D) ELASTIC CUFF OPENING RELAXED	8	8.5	9	9.5	9.5	10	10	10.5	11	11.5	11.5	12	12	12	12

LADIES

SIZE	4	6	8	10	12	XS	S	M	L	XL	2XL	3XL	4XL	5XL
TO FIT APPROX CHEST (MEASURED AT PERSONS CHEST... APPROX)	60	63	66	70	78	85	90	95	100	105	110	115	120	125
ACTUAL JACKET WIDTH (ACTUAL GARMENT WIDTH)	37	42	45	49	51	52	55	57	60	62	65	67	70	72
ACTUAL JACKET LENGTH (MEASURED FROM TOP OF SHOULDER TO BOTTOM OF JACKET (ELASTIC WAIST IS SLIGHTLY SHORTER))	45	50	54	59	62	65	67	69	72	76	82	84	87	90
ACTUAL JACKET SLEEVE LENGTH (FROM CENTRE BACK TO BOTTOM OF SLEEVE)	54	60	64	69	75	84	85	87	89	93	96	98	100	101
ELASTIC CUFF OPENING RELAXED	8	8.5	9	9.5	9.5	10	10	10.5	11	11.5	11.5	12	12	12

SWEATER VEST 1/4 ZIP



FABRIC/MATERIALS

Polar fleecy.
Fleecy.

POCKETS

Welt pocket
Patch pocket
Side pocket

SLEEVE TYPE

Sleeveless

SPECIAL NOTES:

Bungee waist

STANDARD

SIZE	4	6	8	10	12	XS	S	M	L	XL	2XL	3XL	4XL	5XL	6XL
TO FIT APPROX CHEST (MEASURED AT PERSONS CHEST... APPROX)	60	63	66	70	78	85	90	95	100	105	110	115	120	125	130
(A)ACTUAL JACKET WIDTH (ACTUAL GARMENT WIDTH)	37	42	45	49	51	55	57	60	62	65	67	70	72	75	77
(B)ACTUAL JACKET LENGTH (MEASURED FROM TOP OF SHOULDER TO BOTTOM OF JACKET) (ELASTIC WAIST IS SLIGHTLY SHORTER)	44	50	54	59	62	65	69	74	77	79	82	84	87	90	92
ACTUAL JACKET SLEEVE LENGTH (FROM CENTRE BACK TO BOTTOM OF SLEEVE)	54	60	64	69	75	84	87	92	94	96	98	100	103	105	108
ELASTIC CUFF OPENING RELAXED	8	8.5	9	9.5	9.5	10	10	10.5	11	11.5	11.5	12	12	12	12

LADIES

SIZE	4	6	8	10	12	XS	S	M	L	XL	2XL	3XL	4XL	5XL
TO FIT APPROX CHEST (MEASURED AT PERSONS CHEST... APPROX)	60	63	66	70	78	85	90	95	100	105	110	115	120	125
ACTUAL JACKET WIDTH (ACTUAL GARMENT WIDTH)	37	42	45	49	51	52	55	57	60	62	65	67	70	72
ACTUAL JACKET LENGTH (MEASURED FROM TOP OF SHOULDER TO BOTTOM OF JACKET) (ELASTIC WAIST IS SLIGHTLY SHORTER)	45	50	54	59	62	65	67	69	72	76	82	84	87	90
ACTUAL JACKET SLEEVE LENGTH (FROM CENTRE BACK TO BOTTOM OF SLEEVE)	54	60	64	69	75	84	85	87	89	93	96	98	100	101
ELASTIC CUFF OPENING RELAXED	8	8.5	9	9.5	9.5	10	10	10.5	11	11.5	11.5	12	12	12

SWEATER VEST FULL ZIP



FABRIC/MATERIALS

Polar fleecy.
Fleecy.

POCKETS

Welt pocket
Patch pocket
Side pocket

SLEEVE TYPE

Sleeveless

SPECIAL NOTES:

Bungee cord waist

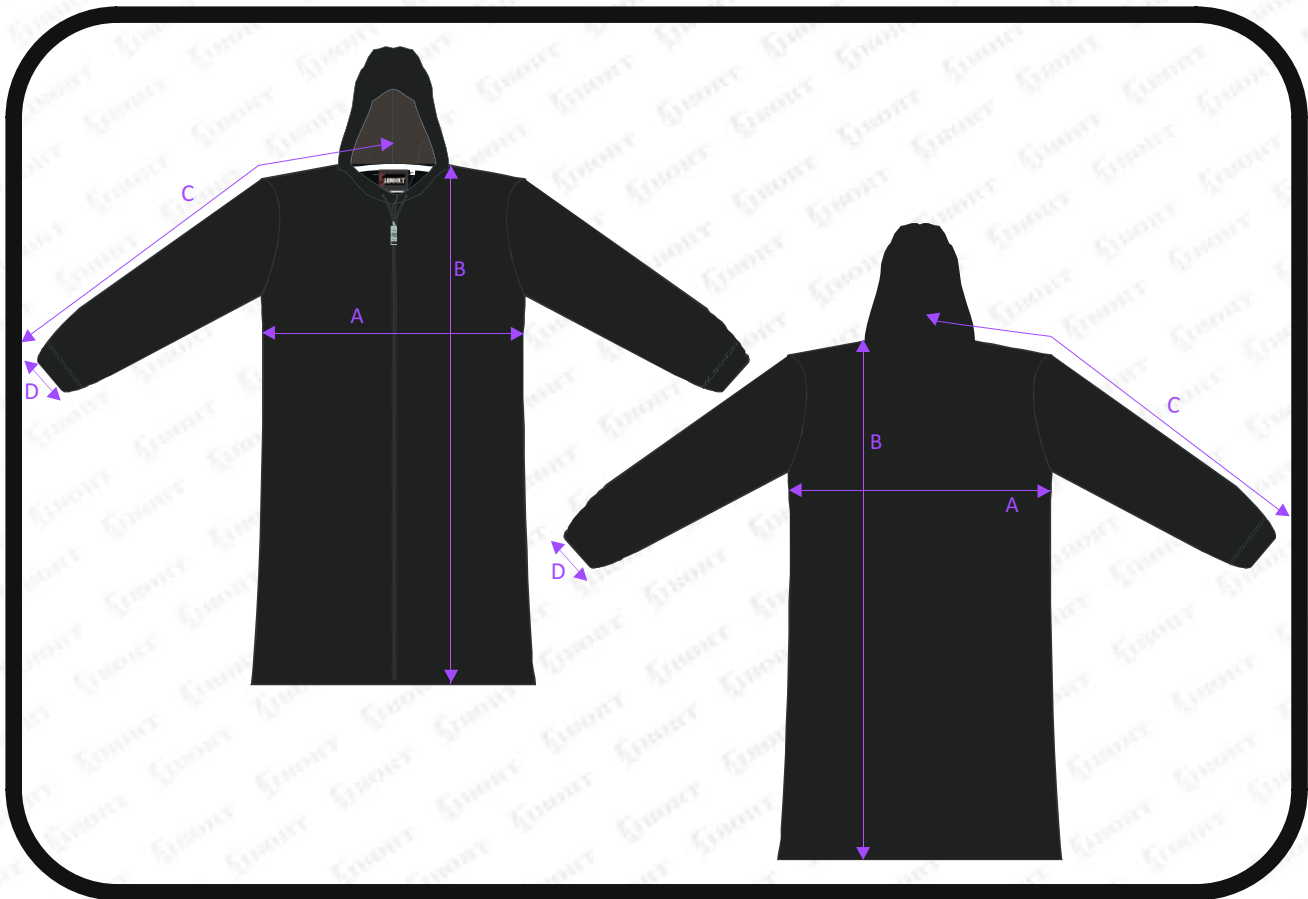
STANDARD

SIZE	4	6	8	10	12	XS	S	M	L	XL	2XL	3XL	4XL	5XL	6XL
TO FIT APPROX CHEST (MEASURED AT PERSONS CHEST... APPROX)	60	63	66	70	78	85	90	95	100	105	110	115	120	125	130
(A) ACTUAL JACKET WIDTH (ACTUAL GARMENT WIDTH)	37	42	45	49	51	55	57	60	62	65	67	70	72	75	77
(B) ACTUAL JACKET LENGTH (MEASURED FROM TOP OF SHOULDER TO BOTTOM OF JACKET) (ELASTIC WAIST IS SLIGHTLY SHORTER)	44	50	54	59	62	65	69	74	77	79	82	84	87	90	92
ACTUAL JACKET SLEEVE LENGTH (FROM CENTRE BACK TO BOTTOM OF SLEEVE)	54	60	64	69	75	84	87	92	94	96	98	100	103	105	108
ELASTIC CUFF OPENING RELAXED	8	8.5	9	9.5	9.5	10	10	10.5	11	11.5	11.5	12	12	12	12

LADIES

SIZE	4	6	8	10	12	XS	S	M	L	XL	2XL	3XL	4XL	5XL
TO FIT APPROX CHEST (MEASURED AT PERSONS CHEST... APPROX)	60	63	66	70	78	85	90	95	100	105	110	115	120	125
ACTUAL JACKET WIDTH (ACTUAL GARMENT WIDTH)	37	42	45	49	51	52	55	57	60	62	65	67	70	72
ACTUAL JACKET LENGTH (MEASURED FROM TOP OF SHOULDER TO BOTTOM OF JACKET) (ELASTIC WAIST IS SLIGHTLY SHORTER)	45	50	54	59	62	65	67	69	72	76	82	84	87	90
ACTUAL JACKET SLEEVE LENGTH (FROM CENTRE BACK TO BOTTOM OF SLEEVE)	54	60	64	69	75	84	85	87	89	93	96	98	100	101
ELASTIC CUFF OPENING RELAXED	8	8.5	9	9.5	9.5	10	10	10.5	11	11.5	11.5	12	12	12

JACKET 3/4 COAT



FABRIC/MATERIALS

Sportsfibre.

SLEEVE TYPE

Long sleeve.
Elastic Cuff.
Adjustable Velcro Elastic Cuff.

POCKETS

Zip side pockets
Side pockets
Welt pockets

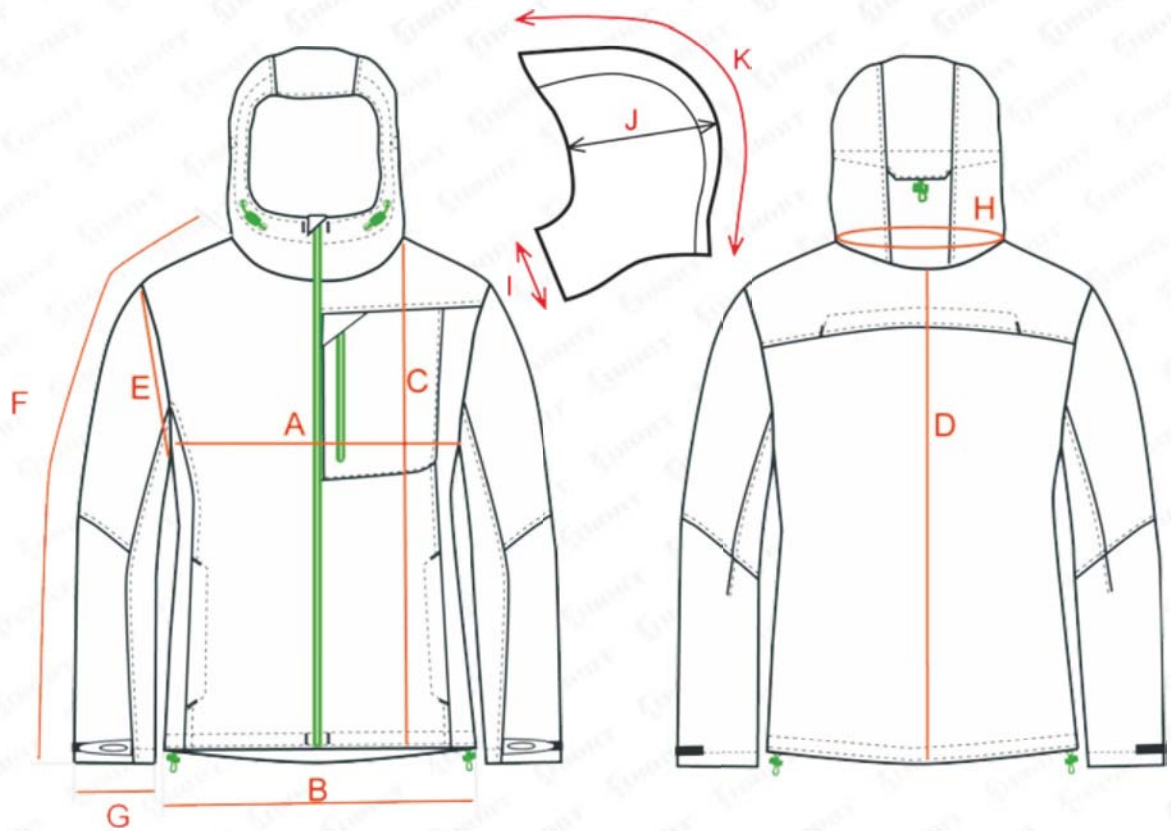
ZIP DETAIL

Full zip.

See fabric information page for available colours

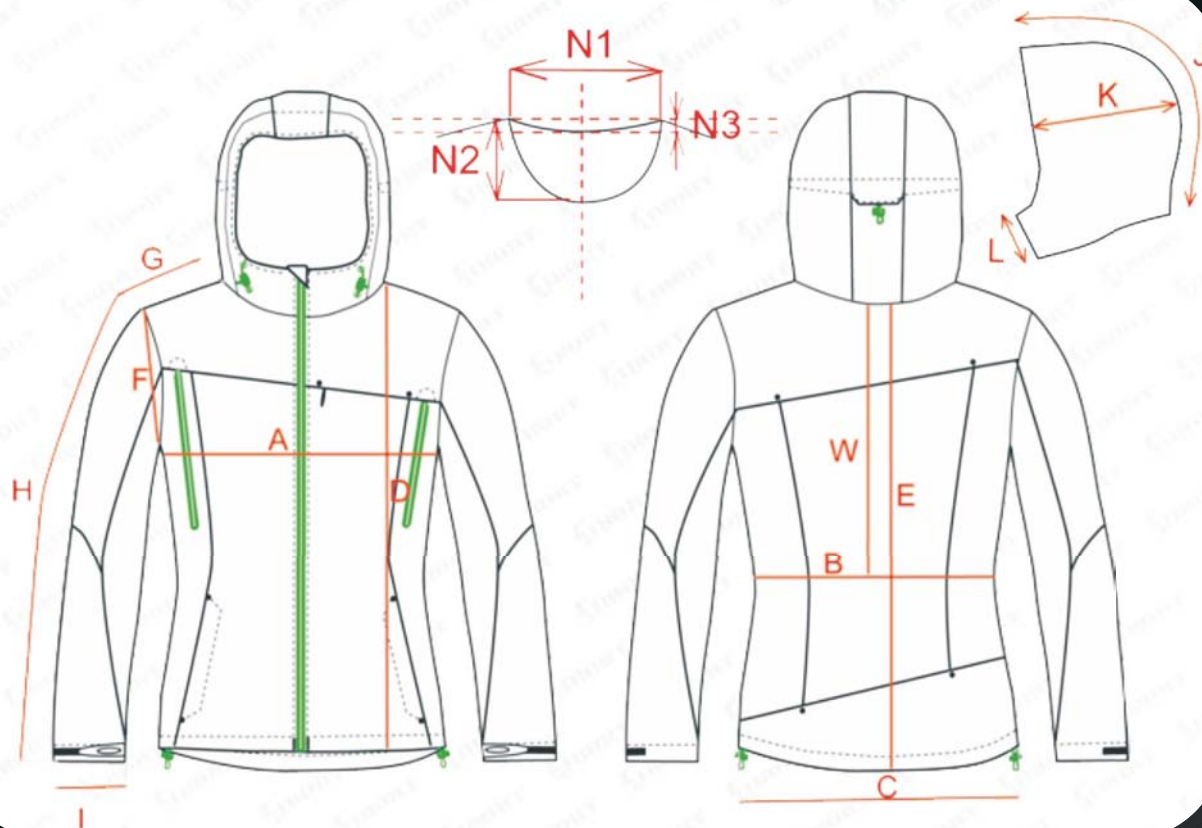
THIS SIZING DOES NOT APPLY TO OFF THE SHELF NON KOMBAT MANUFACTURED GARMENTS

SIZE	4	6	8	10	12	XS	S	M	L	XL	2XL	3XL	4XL	5XL	6XL
TO FIT APPROX CHEST (MEASURED AT PERSONS CHEST... APPROX)	60	63	66	70	78	85	90	95	100	105	110	115	120	125	130
(A) ACTUAL JACKET WIDTH (ACTUAL GARMENT WIDTH)	37	42	45	49	51	55	57	60	62	65	67	70	72	75	77
(B) 3/4 COAT LENGTH	58	63	68	75	80	86	88	95	98	101	103	105	106	106	106
(C) ACTUAL JACKET SLEEVE LENGTH (FROM CENTRE BACK TO BOTTOM OF SLEEVE)	54	60	64	69	75	84	87	92	94	96	98	100	103	105	108
(D) ELASTIC CUFF OPENING RELAXED	8	8.5	9	9.5	9.5	10	10	10.5	11	11.5	11.5	12	12	12	12



	COOPER- softshell jacket	Size	M	L	XL	XXL
A	1/2 chest	cm	60	62	65	67
B	1/2 low hem	cm	57	59	62	64
C	Front length	cm	74	76	78	80
D	CB length	cm	76	78	80	82
E	1/2 armhole	cm	26	27	28	29
F	Sleeve length (including shoulder)	cm	82	85	88	91
G	1/2 sleeve width	cm	13	14	15	15
H	Neck girth	cm	54	56	58	60
I	Hood stand-up	cm	10	10	10	10
J	1/2 hood width	cm	27	28	28	29
K	Hood length	cm	54	55	55	56

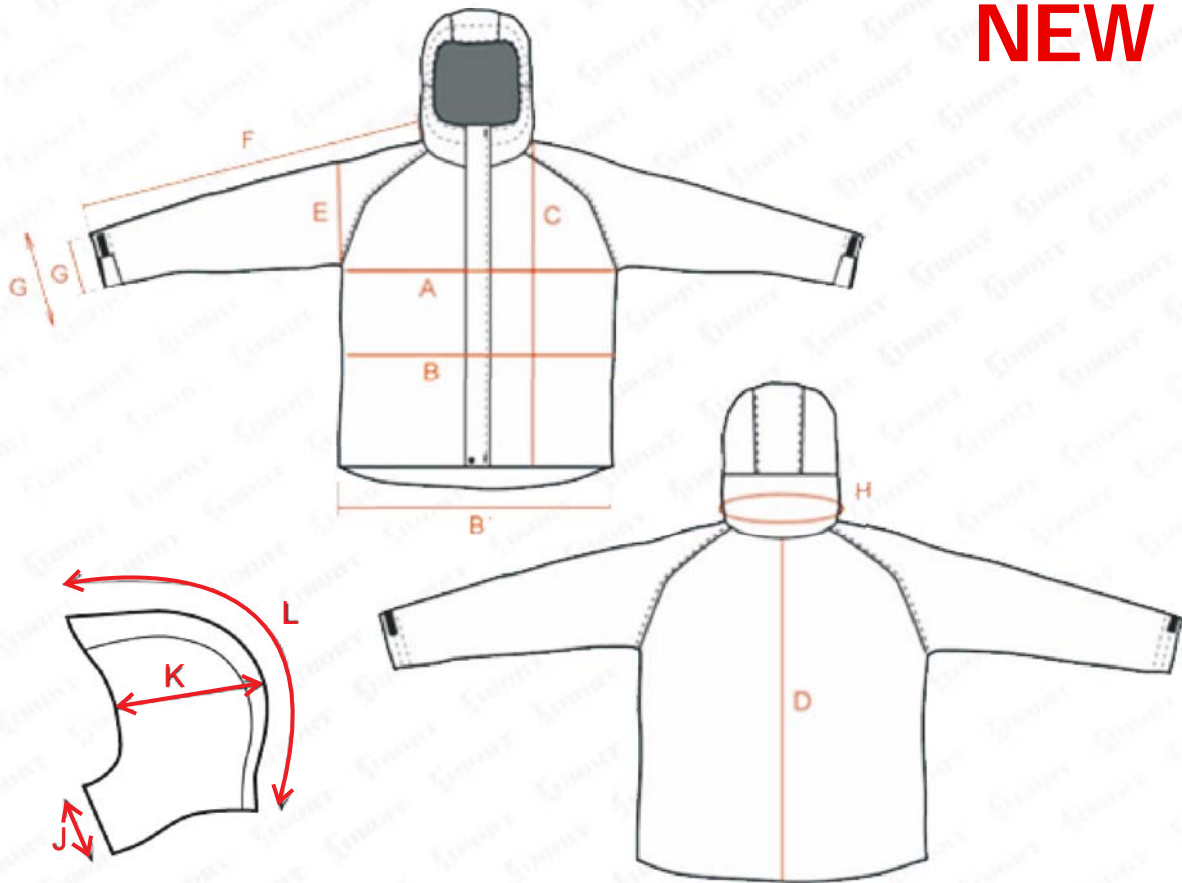
COOPER SOFTSHELL LADY



SALVIA - lady softshell		Size	XS	S	M	L	XL
A	1/2 chest (2cm under armhole)	cm	47	49	51	53	55
B	1/2 waist	cm	43	45	47	49	51
C	1/2 low hem (cuff)	cm	48	50	52	54	56
D	Front length	cm	63	63	65	67	69
E	CB length	cm	65	65	67	69	71
W	Waist line	cm	39	39.5	40	40.5	41
F	1/2 arm hole	cm	21	22	23	24	25
G	Shoulder length	cm	12	12.5	13	13.5	14
H	Sleeve length	cm	62	62	64	66	68
I	1/2 sleeve width	cm	12	12	13	13	14
J	Hood length	cm	48	48	49	49	50
K	1/2 hood width	cm	26	26	27	27	27
L	Hood stand up	cm	8	8	8	8	8
N1	Neck opening	cm	21.5	21.5	22	22.5	22.5
N2	Neck front drop	cm	9.5	10	10.5	11	11
N3	Neck back drop	cm	1.5	1.5	1.5	1.5	1.5

SPRING HOODIE JACKET FOR MEN

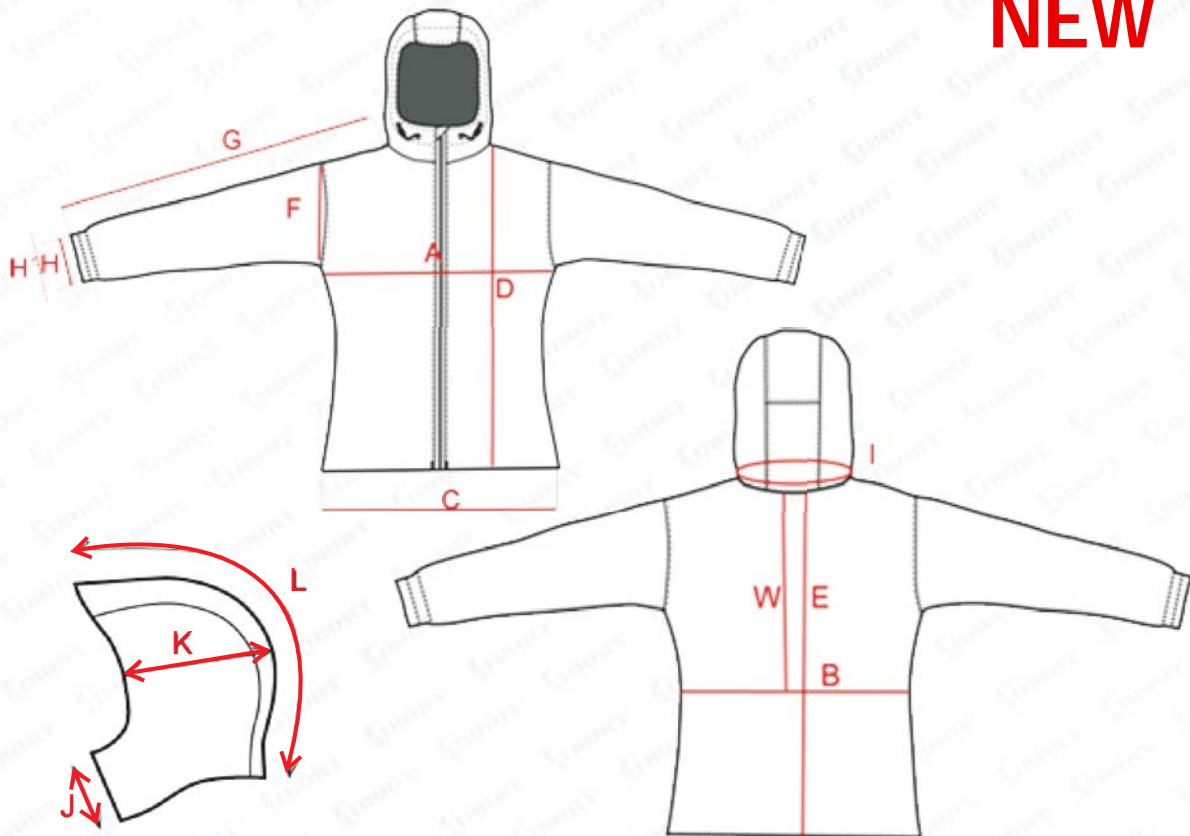
NEW



		M	L	XL	XXL
1/2 chest	cm	62	64	66	68
1/2 waist	cm	60	62	64	66
1/2 low hem	cm	60	62	64	66
Front length	cm	75	77	79	81
CB length	cm	79	81	83	85
1/2 armhole	cm	28	29	30	31
Sleeve length	cm	81	84	87	89
1/2 sleeve width (relaxed)	cm	13.5	14	14.5	15
1/2 sleeve width (stretched)	cm	16.5	17	17.5	18
Neck girth	cm	54	56	58	60
Collar high / Stand up	cm	9	10	10	10
1/2 hood width	cm	27	28	28	29
Hood length	cm	54	55	55	56

SPRING HOODIE JACKET FOR WOMEN

NEW



		XS	S	M	L	XL
1/2 chest	cm	50	52	54	56	58
1/2 waist	cm	46	48	50	52	54
1/2 low hem	cm	50	52	54	56	58
Front length	cm	62	64	66	68	70
CB length	cm	61	63	65	67	69
Waist line	cm	40.5	41	41.5	42	42.5
1/2 armhole	cm	22	23	24	25	26
Sleeve length	cm	74	76	78	80	82
1/2 sleeve width (relaxed)	cm	10	10.5	11	11.5	12
1/2 sleeve width (stretched)	cm	14	14.5	15	15.5	16
Neck girth	cm	52	53	54	55	56
Hood stand-up	cm	8	8	8	9	9
1/2 hood width	cm	26	26	27	27	28
Hood length	cm	48	48	49	49	49



IBORT

MENS

MENS				
APPROX ONLY				
ACTUAL SIZE	CHEST cm	CHEST inch	WAIST cm	WAIST inch
XS	85	33 inch	70-75	28-30
S	90	35 inch	75-80	30-32
M	95	37 inch	80-85	32-34
L	100	39 inch	85-90	34-36
XL	105	41 inch	90-95	36-38
2XL	110	43 inch	95-100	38-40
3XL	115	45 inch	100-105	40-42
4XL	120	47 inch	105-110	42-44
5XL	125	49 inch	110-115	44-46
THIS SIZE GUIDE APPLIES TO ALL MENS GARMENTS				

***The following guide has been put together to help you and your customers choose the correct size. This should be used however only as a guide. Please be aware that these measurements indicate the size of a person not the garment. Garments will vary according to size and fit of a particular garment. If you have any queries relating to a fit of a certain style, please contact our sales representative who can advise you of the fit of particular garments.**



IBORT

LADIES

LADIES				
APPROX ONLY				
ACTUAL SIZE	CHEST cm	CHEST inch	WAIST cm	WAIST inch
XS (8)	85	34 inch	70-75	28-30
S (10)	90	36 inch	75-80	30-32
M (12)	95	38 inch	80-85	32-34
L (14)	100	40 inch	85-90	34-36
XL (16)	105	42 inch	90-95	36-38
2XL (18)	110	44 inch	95-100	38-40
3XL (20)	115	46 inch	100-105	40-42
4XL (22)	120	48 inch	105-110	42-44
5XL (24)	125	50 inch	110-115	44-46

THIS SIZE GUIDE APPLIES TO ALL LADIES GARMENTS EXCLUDING LYCRA

LADIES LYCRA				
APPROX ONLY				
ACTUAL SIZE	CHEST cm	CHEST inch	WAIST cm	WAIST inch
XS (8)	82	32 inch	65	25 inch
S (10)	89	35 inch	70	27 inch
M (12)	95	37 inch	75	29 inch
L (14)	100	39 inch	80	31 inch
XL (16)	105	41 inch	85	33 inch
2XL (18)	110	43 inch	90	35 inch
3XL (20)	115	45 inch	95	37 inch
4XL (22)	120	47 inch	100	39 inch
5XL (24)				

THIS SIZE GUIDE APPLIES ONLY FOR LADIES LYCRA GARMENTS

***The following guide has been put together to help you and your customers choose the correct size. This should be used however only as a guide. Please be aware that these measurements indicate the size of a person not the garment. Garments will vary according to size and fit of a particular garment. If you have any queries relating to a fit of a certain style, please contact our sales representative who can advise you of the fit of particular garments.**



IBORT

KIDS

KIDS				
APPROX ONLY				
ACTUAL SIZE	CHEST cm	CHEST inch	WAIST cm	WAIST inch
4	58	23 inch	56	22 inch
6	60	24 inch	58	23 inch
8	66	26 inch	61	24 inch
10	70	28 inch	63	25 inch
12	78	31 inch	66	26 inch

THIS SIZE GUIDE APPLIES TO ALL CHILDRENS GARMENTS EXCLUDING LYC

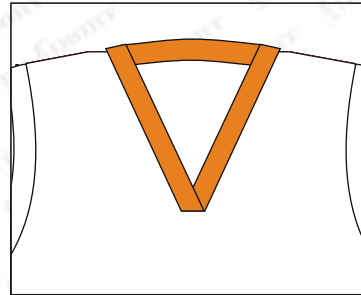
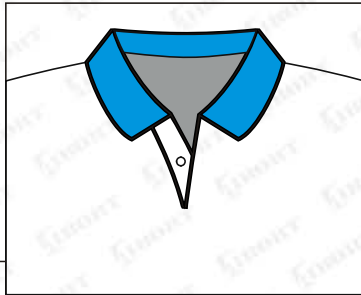
KIDS LYCRA				
APPROX ONLY				
ACTUAL SIZE	CHEST cm	CHEST inch	WAIST cm	WAIST inch
6	58	24 inch	54	21 inch
8	63	25 inch	56	22 inch
10	68	27 inch	58	23 inch
12	75	29 inch	61	24 inch

THIS SIZE GUIDE APPLIES ONLY FOR CHILDRENS LYCRA GARMENTS

*The following guide has been put together to help you and your customers choose the correct size. This should be used however only as a guide. Please be aware that these measurements indicate the size of a person not the garment. Garments will vary according to size and fit of a particular garment. If you have any queries relating to a fit of a certain style, please contact our sales representative who can advise you of the fit of particular garments.

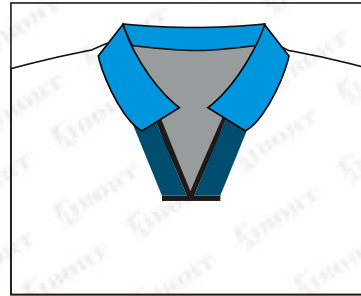
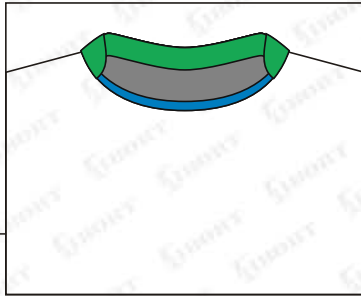
COLLAR TYPES

**STANDARD DRILL
COLLAR WITH
FOOTY V
JERSEYS ONLY**



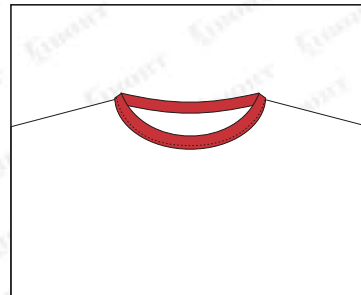
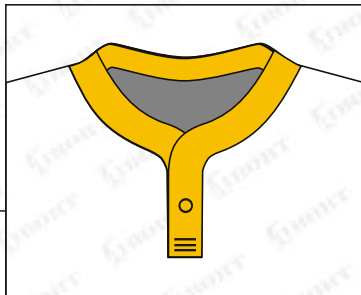
X OVER V

**HUMMEL NECK
TSHIRTS ONLY**



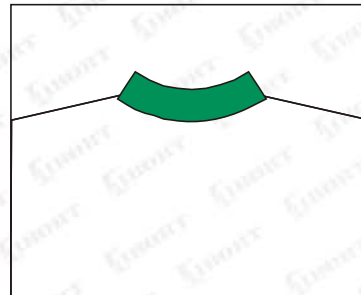
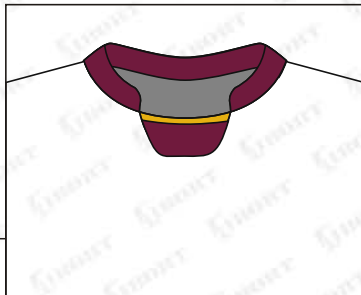
**LAKER V
WITH OR WITHOUT
COLLAR**

**Y NECK
JERSEYS ONLY**



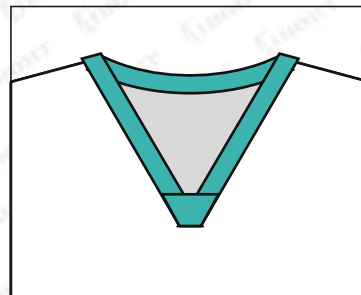
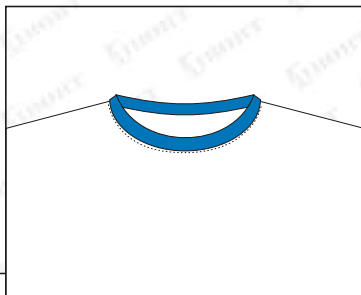
**12mm
BINDING
TSHIRTS ONLY**

**LIVERPOOL NECK
NOT AVAILABLE
ON JERSEYS**



**TSHIRT
RIBBING
TSHIRTS ONLY**

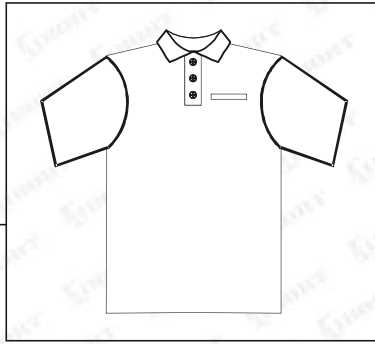
**10mm TSHIRT
SUB NECK
TSHIRTS ONLY**



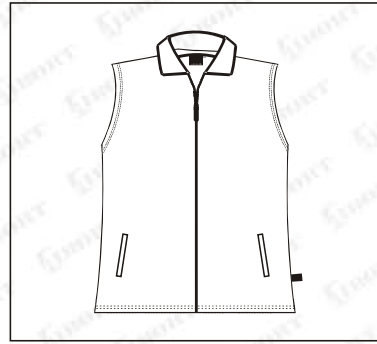
**PRO V
AFL ONLY**

POCKET TYPES

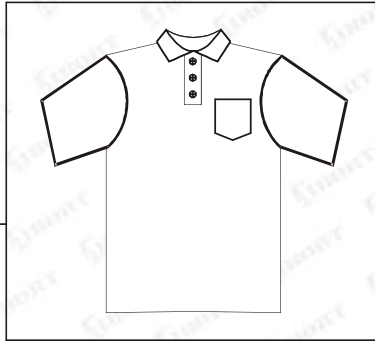
**INSIDE
RHC OR LHC
POCKET**



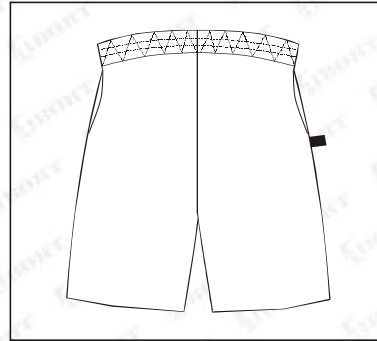
**WELT
POCKET**



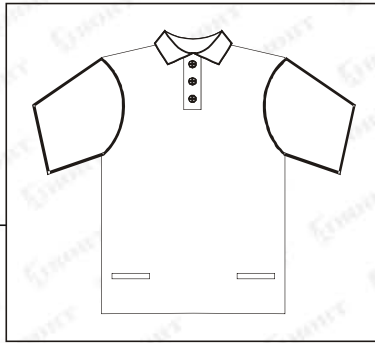
**STANDARD
RHC OR LHC
POCKET**



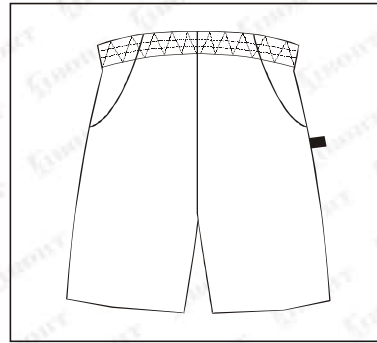
**STANDARD
POCKET**



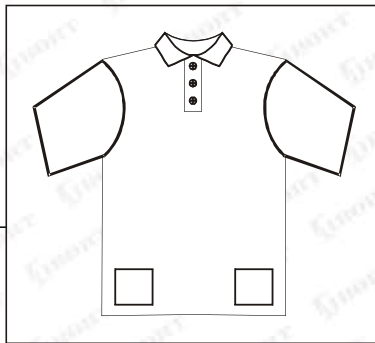
**INSIDE
WAIST POCKET**



**CUTAWAY
POCKET**



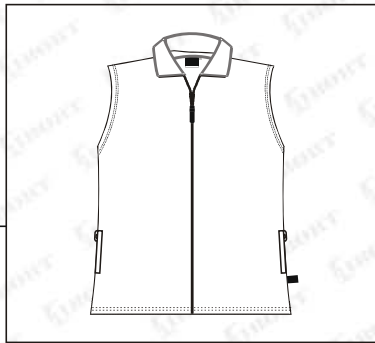
**STANDARD
WAIST POCKET**



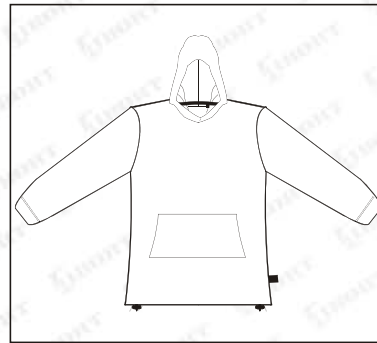
**PIPED
POCKET**



**SIDE
POCKET**



**PATCH
POCKET**



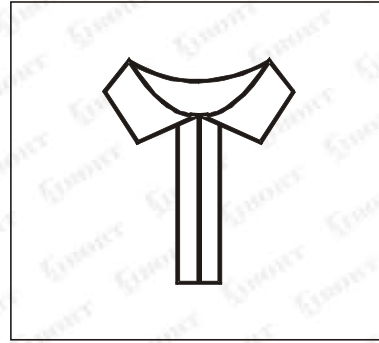
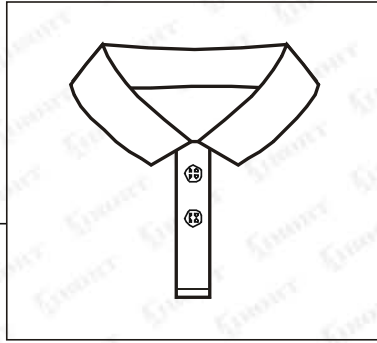
STANDARD ADULT POCKET FINISHED SIZE: 12.5mm wide X 13.5mm high

STANDARD KIDS POCKET FINISHED SIZE: 9mm wide X 8.5mm high

WAIST POCKET FINISHED SIZE: 12mm wide X 13.5mm high

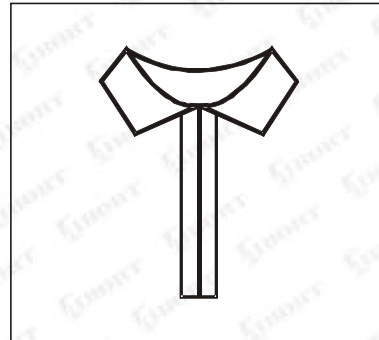
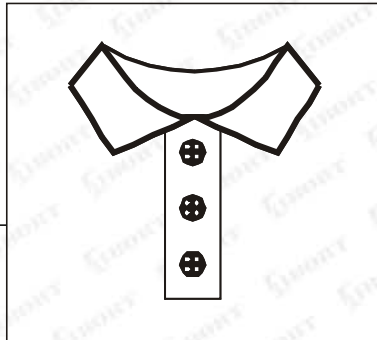
PLACKET TYPES

**STANDARD
2 BUTTON**



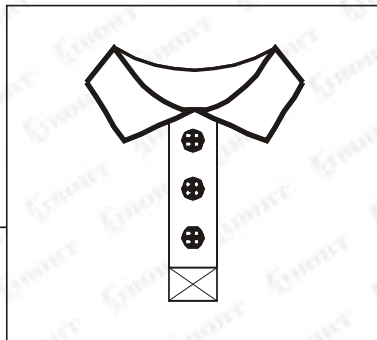
**15CM
ZIP**

**STANDARD 3
OR 4 BUTTONS**



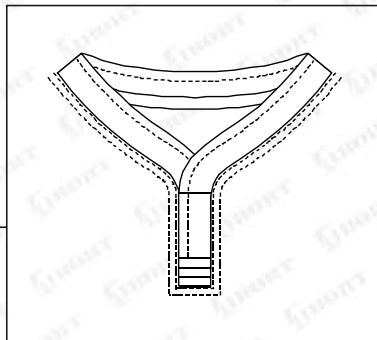
**20 CM
ZIP**

**BOX 3 OR
4 BUTTONS**



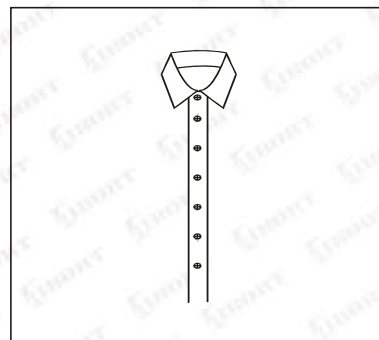
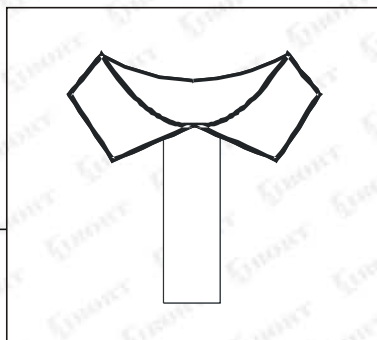
**1/4 OR
FULL ZIP**

Y NECK



**NETBALL
SUIT ZIP**

**10CM
NO BUTTONS**



**FULL
BUTTON**

1>MOQ

For all designs, if you choose our available fabric and colors, then there is no MOQ.

if you have your special color request, for knitted products, MOQ is 200pcs/color; for woven products, MOQ is 500pcs/color

2>Price

If your qty/design is less than 300pcs, pls see our price list, if your qty is more than 300pcs, pls contact us so that we could check price pls note our price is FOB XIAMEN CHINA USD

If you need CNF price, pls inform your request air or sea port name or your details postal address so that we could check freight, normally if your qty is less than 200pcs/order, we suggest that you use courier.

3>Delivery Time

if you choose our available fabric and colors and our designs and size, 4 weeks is okay,

if you choose our available fabric and colors and our designs but your sizes, 5 weeks is okay.

if you choose our available fabric and colors and your designs and your sizes, 6 weeks is okay.

if you have your own fabric and designs and size, 8weeks is okay

4>Available fabric

You could see our available fabric desc. and color list from catalogue. if you would like to have our original color swatches and quality swatches book, you need pay USD40.00 per set.

pls note our available fabric is just for the orders which qty less than 300pcs/color. if your order qty is more than 300pcs/color, we need place new fabric for you.

5>Payment

For small qty order, we could accept paypal and west union.

if your order qty is less than 100pcs, we just accept full payment before production.

if your order qty is between 100-300pcs, we accept 50% before production, and the balance before despatch.